

Datasheet for ABIN954061
anti-PDE12 antibody (C-Term)[Go to Product page](#)

2 Images

Overview

Quantity:	0.4 mL
Target:	PDE12
Binding Specificity:	AA 369-398, C-Term
Reactivity:	Human
Host:	Rabbit
Clonality:	Polyclonal
Conjugate:	This PDE12 antibody is un-conjugated
Application:	Western Blotting (WB), Flow Cytometry (FACS), Enzyme Immunoassay (EIA)

Product Details

Immunogen:	KLH conjugated synthetic peptide between 369-398 amino acids from the C-terminal region of Human PDE12
Isotype:	Ig Fraction
Specificity:	This antibody recognizes Human PDE12 (C-term).
Purification:	Protein A column, followed by peptide affinity purification

Target Details

Target:	PDE12
Alternative Name:	PDE12 (PDE12 Products)
Background:	Synonyms: 2', 2'-PDE, 2-PDE, 5'-phosphodiesterase 12

Target Details

Molecular Weight: 67352 Da

Gene ID: 201626

NCBI Accession: [NP_808881](#)

Application Details

Application Notes: Optimal working dilution should be determined by the investigator.

Restrictions: For Research Use only

Handling

Format: Liquid

Concentration: 0.25 mg/mL

Buffer: PBS containing 0.09 % (W/V) Sodium Azide as preservative

Preservative: Sodium azide

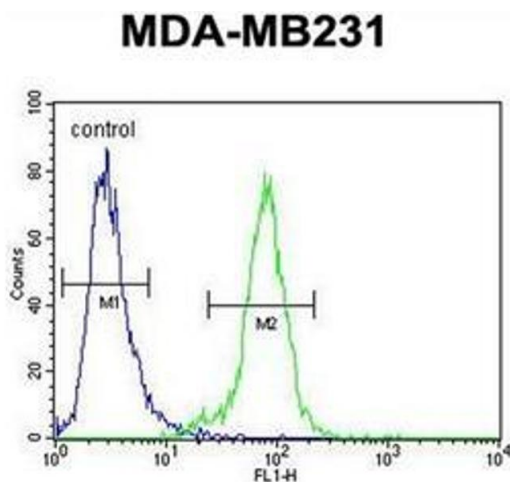
Precaution of Use: This product contains sodium azide: a POISONOUS AND HAZARDOUS SUBSTANCE which should be handled by trained staff only.

Handling Advice: Avoid repeated freezing and thawing.

Storage: 4 °C/-20 °C

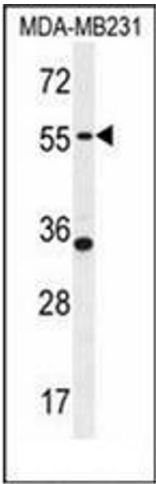
Storage Comment: Store undiluted at 2-8 °C for one month or (in aliquots) at -20 °C for longer.

Images



Flow Cytometry

Image 1. Flow cytometric analysis of MDA-MB231 cells using PDE12 Antibody (C-term) Cat.-No AP53232PU-N (right histogram) compared to a negative control cell (left histogram). FITC-conjugated goat-anti-rabbit secondary antibodies were used for the analysis.



Western Blotting

Image 2. Western blot analysis of PDE12 Antibody (C-term) in MDA-MB231 cell line lysates (35ug/lane). This demonstrates the PDE12 antibody detected the PDE12 protein (arrow).