

Datasheet for ABIN954063
anti-PDE1B antibody (C-Term)[Go to Product page](#)

2 Images

Overview

Quantity:	0.4 mL
Target:	PDE1B
Binding Specificity:	AA 480-508, C-Term
Reactivity:	Human, Mouse
Host:	Rabbit
Clonality:	Polyclonal
Conjugate:	This PDE1B antibody is un-conjugated
Application:	Western Blotting (WB), Immunohistochemistry (Paraffin-embedded Sections) (IHC (p)), Enzyme Immunoassay (EIA)

Product Details

Immunogen:	KLH conjugated synthetic peptide between 480-508 amino acids from the C-terminal region of Human PDE1B
Isotype:	Ig Fraction
Specificity:	This antibody recognizes Human and Mouse PDE1B (C-term).
Purification:	Protein A column, followed by peptide affinity purification

Target Details

Target:	PDE1B
Alternative Name:	PDE1B (PDE1B Products)

Target Details

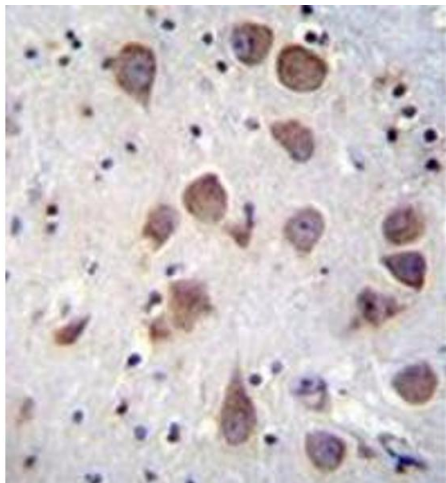
Background:	Cyclic nucleotide phosphodiesterases (PDEs) catalyze hydrolysis of the cyclic nucleotides cAMP and cGMP to the corresponding nucleoside 5-prime-monophosphates. Mammalian PDEs have been classified into several families based on their biochemical properties. Members of the PDE1 family, such as PDE1B, are calmodulin (see MIM 114180)-dependent PDEs (CaM-PDEs) that are stimulated by a calcium-calmodulin complex (Repaske et al., 1992 [PubMed 1326532]).Synonyms: 5'-cyclic nucleotide phosphodiesterase 1B, 63 kDa Cam-PDE, Calcium/calmodulin-dependent 3', Cam-PDE 1B, PDE1B1, PDES1B, Phosphodiesterase 1B, Phosphodiesterase-1B calmodulin-dependent
Molecular Weight:	61380 Da
Gene ID:	5153
NCBI Accession:	NP_000915
Pathways:	Neurotrophin Signaling Pathway , cAMP Metabolic Process , G-protein mediated Events , Interaction of EGFR with phospholipase C-gamma

Application Details

Application Notes:	Optimal working dilution should be determined by the investigator.
Restrictions:	For Research Use only

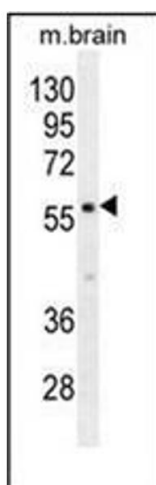
Handling

Format:	Liquid
Concentration:	0.25 mg/mL
Buffer:	PBS containing 0.09 % (W/V) Sodium Azide as preservative
Preservative:	Sodium azide
Precaution of Use:	This product contains sodium azide: a POISONOUS AND HAZARDOUS SUBSTANCE which should be handled by trained staff only.
Handling Advice:	Avoid repeated freezing and thawing.
Storage:	4 °C/-20 °C
Storage Comment:	Store undiluted at 2-8 °C for one month or (in aliquots) at -20 °C for longer.



Immunohistochemistry (Paraffin-embedded Sections)

Image 1. Immunohistochemistry analysis in formalin fixed and paraffin embedded human brain tissue reacted with PDE1B Antibody (C-term) followed by peroxidase conjugation of the secondary antibody and DAB staining.



Western Blotting

Image 2. Western blot analysis of PDE1B Antibody (C-term) in mouse brain tissue lysates (35ug/lane). This demonstrates the PDE1B antibody detected the PDE1B protein (arrow).