

Datasheet for ABIN954064
anti-PDE3B antibody (Middle Region)

3 Images

[Go to Product page](#)

Overview

Quantity:	0.4 mL
Target:	PDE3B
Binding Specificity:	AA 407-435, Middle Region
Reactivity:	Human
Host:	Rabbit
Clonality:	Polyclonal
Conjugate:	This PDE3B antibody is un-conjugated
Application:	Western Blotting (WB), Immunofluorescence (IF), Flow Cytometry (FACS), Enzyme Immunoassay (EIA)

Product Details

Immunogen:	KLH conjugated synthetic peptide between 407-435 amino acids from the Central region of Human PDE3B
Isotype:	Ig Fraction
Specificity:	This antibody recognizes Human PDE3B (Center).
Purification:	Protein A column, followed by peptide affinity purification

Target Details

Target:	PDE3B
Alternative Name:	PDE3B (PDE3B Products)

Target Details

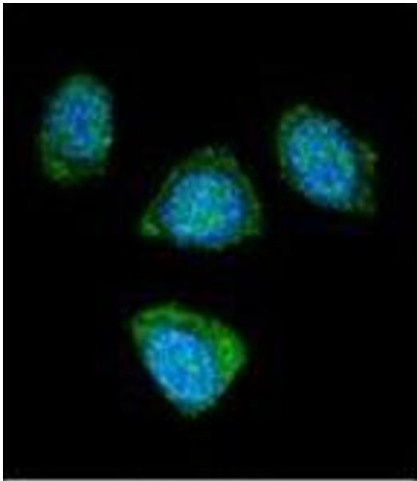
Background:	Cyclic nucleotide phosphodiesterase with a dual-specificity for the second messengers cAMP and cGMP, which are key regulators of many important physiological processes, PDE3B may play a role in fat metabolism.Synonyms: 5'-cyclic phosphodiesterase B, CGI-PDE B, CGIP, CGIP1, CGIPDE1, Cyclic GMP-inhibited phosphodiesterase B, HcGIP1, Phosphodiesterase 3B, Phosphodiesterase-3B cGMP-inhibited, cGMP-inhibited 3'
Molecular Weight:	124333 Da
Gene ID:	5140
NCBI Accession:	NP_000913
Pathways:	Negative Regulation of Hormone Secretion , Carbohydrate Homeostasis , cAMP Metabolic Process

Application Details

Application Notes:	Optimal working dilution should be determined by the investigator.
Restrictions:	For Research Use only

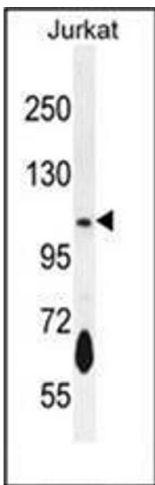
Handling

Format:	Liquid
Concentration:	0.25 mg/mL
Buffer:	PBS containing 0.09 % (W/V) Sodium Azide as preservative
Preservative:	Sodium azide
Precaution of Use:	This product contains sodium azide: a POISONOUS AND HAZARDOUS SUBSTANCE which should be handled by trained staff only.
Handling Advice:	Avoid repeated freezing and thawing.
Storage:	4 °C/-20 °C
Storage Comment:	Store undiluted at 2-8 °C for one month or (in aliquots) at -20 °C for longer.



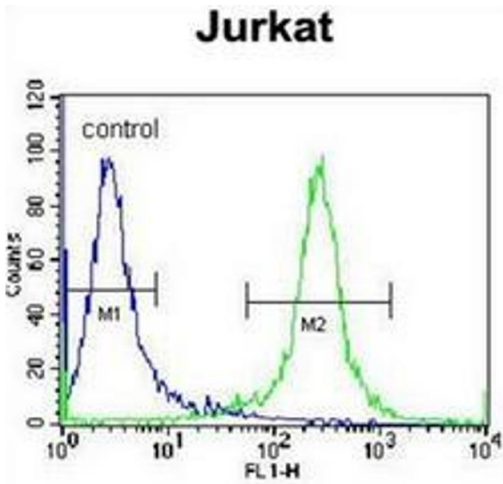
Immunofluorescence

Image 1. Confocal immunofluorescent analysis of PDE3B Antibody (Center) Cat.-No AP53235PU-N with 293 cell followed by Alexa Fluor 488-conjugated goat anti-rabbit IgG (green). DAPI was used to stain the cell nuclear (blue).



Western Blotting

Image 2. Western blot analysis of PDE3B Antibody (Center) in Jurkat cell line lysates (35ug/lane). This demonstrates the PDE3B antibody detected the PDE3B protein (arrow).



Flow Cytometry

Image 3. Flow cytometric analysis of Jurkat cells using PDE3B Antibody (Center) Cat.-No AP53235PU-N (right histogram) compared to a negative control cell (left histogram). FITC-conjugated donkey-anti-rabbit secondary antibodies were used for the analysis.