

Datasheet for ABIN954065  
**anti-PDE4B antibody (Middle Region)**[Go to Product page](#)

## 2 Images

## Overview

Quantity:	0.4 mL
Target:	PDE4B
Binding Specificity:	AA 196-225, Middle Region
Reactivity:	Human
Host:	Rabbit
Clonality:	Polyclonal
Conjugate:	This PDE4B antibody is un-conjugated
Application:	Western Blotting (WB), Flow Cytometry (FACS), Enzyme Immunoassay (EIA)

## Product Details

Immunogen:	KLH conjugated synthetic peptide between 196-225 amino acids from the Central region of Human PDE4B
Isotype:	Ig Fraction
Specificity:	This antibody recognizes Human PDE4B (Center).
Purification:	Protein A column, followed by peptide affinity purification

## Target Details

Target:	PDE4B
Alternative Name:	PDE4B ( <a href="#">PDE4B Products</a> )
Background:	This gene is a member of the type IV, cyclic AMP (cAMP)-specific, cyclic nucleotide

## Target Details

phosphodiesterase (PDE) family. Cyclic nucleotides are important second messengers that regulate and mediate a number of cellular responses to extracellular signals, such as hormones, light, and neurotransmitters. The cyclic nucleotide phosphodiesterases (PDEs) regulate the cellular concentrations of cyclic nucleotides and thereby play a role in signal transduction. This gene encodes a protein that specifically hydrolyzes cAMP. Altered activity of this protein has been associated with schizophrenia and bipolar affective disorder. Alternate transcriptional splice variants, encoding different isoforms, have been characterized. Synonyms: 5'-cyclic phosphodiesterase 4B, DPDE4, EC=3.1.4.17, PDE32, PDE4B, cAMP-specific 3'

Molecular Weight: 83343 Da

Gene ID: 5142

NCBI Accession: [NP\\_001032416](#)

Pathways: [Cellular Response to Molecule of Bacterial Origin](#), [cAMP Metabolic Process](#), [Myometrial Relaxation and Contraction](#)

## Application Details

Application Notes: Optimal working dilution should be determined by the investigator.

Restrictions: For Research Use only

## Handling

Format: Liquid

Concentration: 0.25 mg/mL

Buffer: PBS containing 0.09 % (W/V) Sodium Azide as preservative

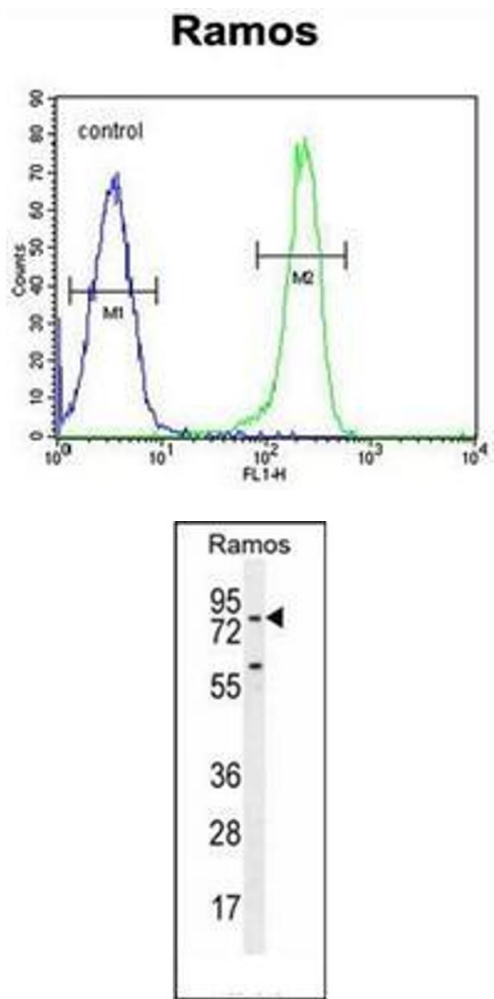
Preservative: Sodium azide

Precaution of Use: This product contains sodium azide: a POISONOUS AND HAZARDOUS SUBSTANCE which should be handled by trained staff only.

Handling Advice: Avoid repeated freezing and thawing.

Storage: 4 °C/-20 °C

Storage Comment: Store undiluted at 2-8 °C for one month or (in aliquots) at -20 °C for longer.



Flow Cytometry

**Image 1.** Flow cytometric analysis of Ramos cells using PDE4B Antibody (Center) Cat.-No AP53236PU-N (right histogram) compared to a negative control cell (left histogram). FITC-conjugated goat-anti-rabbit secondary antibodies were used for the analysis.

Western Blotting

**Image 2.** Western blot analysis of PDE4B Antibody (Center) in Ramos cell line lysates (35ug/lane). This demonstrates the PDE4B antibody detected the PDE4B protein (arrow).