

Datasheet for ABIN954071

**anti-PDHA2 antibody (Middle Region)**

## 2 Images

[Go to Product page](#)

## Overview

Quantity:	0.4 mL
Target:	PDHA2 (PDHa2)
Binding Specificity:	AA 290-318, Middle Region
Reactivity:	Human
Host:	Rabbit
Clonality:	Polyclonal
Conjugate:	This PDHA2 antibody is un-conjugated
Application:	Western Blotting (WB), Immunohistochemistry (Paraffin-embedded Sections) (IHC (p)), Enzyme Immunoassay (EIA)

## Product Details

Immunogen:	KLH conjugated synthetic peptide between 290-318 amino acids from the Central region of Human PDHA2
Isotype:	Ig Fraction
Specificity:	This antibody recognizes Human PDHA2 (Center).
Purification:	Protein A column, followed by peptide affinity purification

## Target Details

Target:	PDHA2 (PDHa2)
Alternative Name:	PDHA2 ( <a href="#">PDHa2 Products</a> )

## Target Details

---

Background:	The pyruvate dehydrogenase complex catalyzes the overall conversion of pyruvate to acetyl-CoA and CO <sub>2</sub> . It contains multiple copies of three enzymatic components: pyruvate dehydrogenase (E1), dihydrolipoamide acetyltransferase (E2) and lipoamide dehydrogenase (E3).Synonyms: PDHAL, PDHE1-A type II, Pyruvate dehydrogenase E1 component subunit alpha testis-specific form mitochondrial
Molecular Weight:	42933 Da
Gene ID:	5161
NCBI Accession:	<a href="#">NP_005381</a>
Pathways:	<a href="#">Warburg Effect</a>

## Application Details

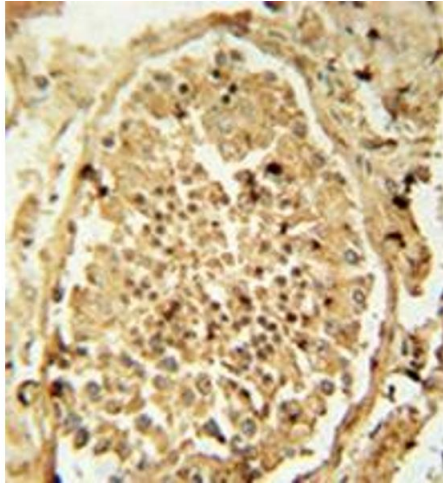
---

Application Notes:	Optimal working dilution should be determined by the investigator.
Restrictions:	For Research Use only

## Handling

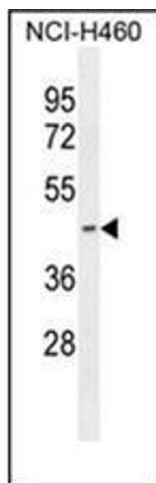
---

Format:	Liquid
Concentration:	0.25 mg/mL
Buffer:	PBS containing 0.09 % (W/V) Sodium Azide as preservative
Preservative:	Sodium azide
Precaution of Use:	This product contains sodium azide: a POISONOUS AND HAZARDOUS SUBSTANCE which should be handled by trained staff only.
Handling Advice:	Avoid repeated freezing and thawing.
Storage:	4 °C/-20 °C
Storage Comment:	Store undiluted at 2-8 °C for one month or (in aliquots) at -20 °C for longer.



### Immunohistochemistry (Paraffin-embedded Sections)

**Image 1.** Immunohistochemistry analysis in formalin fixed and paraffin embedded human testis tissue reacted with PDHA2 Antibody (Center) followed by peroxidase conjugation of the secondary antibody and DAB staining.



### Western Blotting

**Image 2.** Western blot analysis of PDHA2 Antibody (Center) in NCI-H460 cell line lysates (35ug/lane). This demonstrates the PDHA2 antibody detected the PDHA2 protein (arrow).