

Datasheet for ABIN954080
anti-PEAR1 antibody (C-Term)[Go to Product page](#)

2 Images

Overview

Quantity:	0.4 mL
Target:	PEAR1
Binding Specificity:	AA 968-998, C-Term
Reactivity:	Human
Host:	Rabbit
Clonality:	Polyclonal
Conjugate:	This PEAR1 antibody is un-conjugated
Application:	Western Blotting (WB), Immunohistochemistry (Paraffin-embedded Sections) (IHC (p)), Enzyme Immunoassay (EIA)

Product Details

Immunogen:	KLH conjugated synthetic peptide between 968-998 amino acids from the C-terminal region of human PEAR1
Isotype:	Ig Fraction
Specificity:	This antibody recognizes Human PEAR1 (C-term).
Purification:	Protein A column, followed by peptide affinity purification

Target Details

Target:	PEAR1
Alternative Name:	PEAR1 (PEAR1 Products)

Target Details

Background:	PEAR1 is a platelet receptor that signals upon the formation of platelet-platelet contacts independent of platelet activation and secondary to platelet aggregation (Nanda et al., 2005 [PubMed 15851471]).Synonyms: MEGF12, Multiple EGF-like domains protein 12, Multiple epidermal growth factor-like domains protein 12, Platelet endothelial aggregation receptor 1
-------------	--

Molecular Weight:	110666 Da
-------------------	-----------

Gene ID:	375033
----------	--------

NCBI Accession:	NP_001073940
-----------------	------------------------------

Application Details

Application Notes:	Optimal working dilution should be determined by the investigator.
--------------------	--

Restrictions:	For Research Use only
---------------	-----------------------

Handling

Format:	Liquid
---------	--------

Concentration:	0.25 mg/mL
----------------	------------

Buffer:	PBS containing 0.09 % (W/V) Sodium Azide as preservative
---------	--

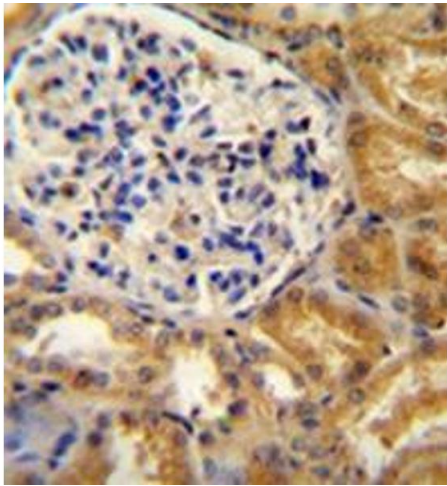
Preservative:	Sodium azide
---------------	--------------

Precaution of Use:	This product contains sodium azide: a POISONOUS AND HAZARDOUS SUBSTANCE which should be handled by trained staff only.
--------------------	--

Handling Advice:	Avoid repeated freezing and thawing.
------------------	--------------------------------------

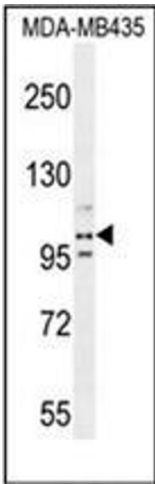
Storage:	4 °C/-20 °C
----------	-------------

Storage Comment:	Store undiluted at 2-8 °C for one month or (in aliquots) at -20 °C for longer.
------------------	--



Immunohistochemistry (Paraffin-embedded Sections)

Image 1. Immunohistochemistry analysis in formalin fixed and paraffin embedded human kidney tissue reacted with PEAR1 Antibody (C-term) followed which was peroxidase conjugated to the secondary antibody and followed by DAB staining. This data demonstrates the use of the PEAR1 antibody (C-term) for immunohistochemistry. Clinical relevance has not been evaluated.



Western Blotting

Image 2. Western blot analysis of PEAR1 Antibody (C-term) in MDA-MB435 cell line lysates (35ug/lane). This demonstrates the PEAR1 antibody detected the PEAR1 protein (arrow).