

Datasheet for ABIN954082
anti-PEG10 antibody (N-Term)[Go to Product page](#)

2 Images

Overview

Quantity:	0.4 mL
Target:	PEG10
Binding Specificity:	AA 1-30, N-Term
Reactivity:	Human
Host:	Rabbit
Clonality:	Polyclonal
Conjugate:	This PEG10 antibody is un-conjugated
Application:	Western Blotting (WB), Flow Cytometry (FACS), Enzyme Immunoassay (EIA)

Product Details

Immunogen:	KLH conjugated synthetic peptide between 1-30 amino acids from the N-terminal region of human PEG10
Isotype:	Ig Fraction
Specificity:	This antibody recognizes Human PEG10 (N-term).
Purification:	Protein A column, followed by peptide affinity purification

Target Details

Target:	PEG10
Alternative Name:	PEG10 (PEG10 Products)
Background:	This is a paternally expressed imprinted gene that encodes transcripts containing two

Target Details

overlapping open reading frames (ORFs), RF1 and RF1/RF2, as well as retroviral-like slippage and pseudoknot elements, which can induce a -1 nucleotide frame-shift. ORF1 encodes a shorter isoform with a CCHC-type zinc finger motif containing a sequence characteristic of gag proteins of most retroviruses and some retrotransposons. The longer isoform is the result of -1 translational frame-shifting leading to translation of a gag/pol-like protein combining RF1 and RF2. It contains the active-site consensus sequence of the protease domain of pol proteins. Additional isoforms resulting from alternatively spliced transcript variants, as well as from use of upstream non-AUG (CUG) start codon, have been reported for this gene. Increased expression of this gene is associated with hepatocellular carcinomas. Synonyms: EDR, Embryonal carcinoma differentiation-regulated protein, KIAA1051, MAR2, MART2, MEF3-like protein 1, MEF3L1, Mammalian retrotransposon-derived protein 2, Myelin expression factor 3-like protein 1, Paternally expressed gene 10 protein, RGAG3, Retrotransposon gag domain-containing protein 3, Retrotransposon-derived gag-like polypeptide, Retrotransposon-derived protein PEG10, Ty3/Gypsy-like protein

Molecular Weight: 80173 Da

Gene ID: 23089

NCBI Accession: [NP_001035242](#)

Application Details

Application Notes: Optimal working dilution should be determined by the investigator.

Restrictions: For Research Use only

Handling

Format: Liquid

Concentration: 0.25 mg/mL

Buffer: PBS containing 0.09 % (W/V) Sodium Azide as preservative

Preservative: Sodium azide

Precaution of Use: This product contains sodium azide: a POISONOUS AND HAZARDOUS SUBSTANCE which should be handled by trained staff only.

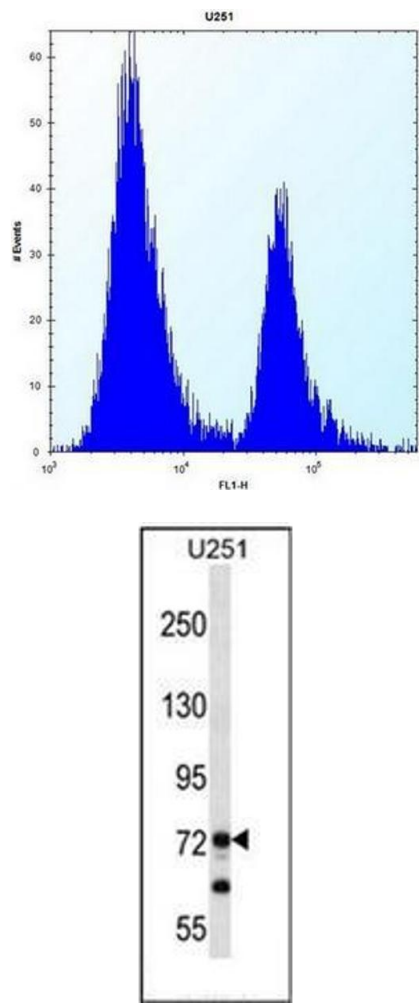
Handling Advice: Avoid repeated freezing and thawing.

Storage: 4 °C/-20 °C

Handling

Storage Comment: Store undiluted at 2-8 °C for one month or (in aliquots) at -20 °C for longer.

Images



Flow Cytometry

Image 1. Flow cytometric analysis of U251 cells using PEG10 Antibody (N-term) Cat.-No AP53253PU-N (right histogram) compared to a negative control cell (left histogram). FITC-conjugated goat-anti-rabbit secondary antibodies were used for the analysis.

Western Blotting

Image 2. Western blot analysis of PEG10 Antibody (N-term) in U251 cell line lysates (35ug/lane). This demonstrates the PEG10 antibody detected the PEG10 protein (arrow).