

Datasheet for ABIN954086
anti-C10orf2 antibody (C-Term)

2 Images

[Go to Product page](#)

Overview

Quantity:	0.4 mL
Target:	C10orf2 (C10ORF2)
Binding Specificity:	AA 663-684, C-Term
Reactivity:	Human
Host:	Rabbit
Clonality:	Polyclonal
Conjugate:	This C10orf2 antibody is un-conjugated
Application:	Western Blotting (WB), Immunohistochemistry (Paraffin-embedded Sections) (IHC (p)), Enzyme Immunoassay (EIA)

Product Details

Immunogen:	KLH conjugated synthetic peptide between 663-684 amino acids from the C-terminal region of human C10orf2
Isotype:	Ig Fraction
Specificity:	This antibody reacts to PEO1.
Cross-Reactivity (Details):	Species reactivity (tested):Human.
Purification:	Affinity chromatography on Protein A

Target Details

Target:	C10orf2 (C10ORF2)
---------	-------------------

Target Details

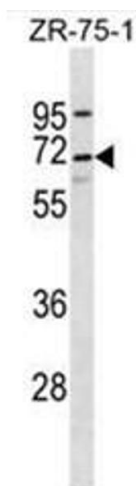
Alternative Name:	PEO1 / Twinkle (C10ORF2 Products)
Background:	This gene encodes a hexameric DNA helicase which unwinds short stretches of double-stranded DNA in the 5' to 3' direction and, along with mitochondrial single-stranded DNA binding protein and mtDNA polymerase gamma, is thought to play a key role in mtDNA replication. The protein localizes to the mitochondrial matrix and mitochondrial nucleoids. Mutations in this gene cause infantile onset spinocerebellar ataxia (IOSCA) and progressive external ophthalmoplegia (PEO) and are also associated with several mitochondrial depletion syndromes. Alternative splicing results in multiple transcript variants encoding distinct isoforms. Synonyms: C10orf2, Progressive external ophthalmoplegia 1 protein, T7-like mitochondrial DNA helicase, Twinkle protein mitochondrial
Gene ID:	56652
NCBI Accession:	NP_001157284

Application Details

Application Notes:	Optimal working dilution should be determined by the investigator.
Restrictions:	For Research Use only

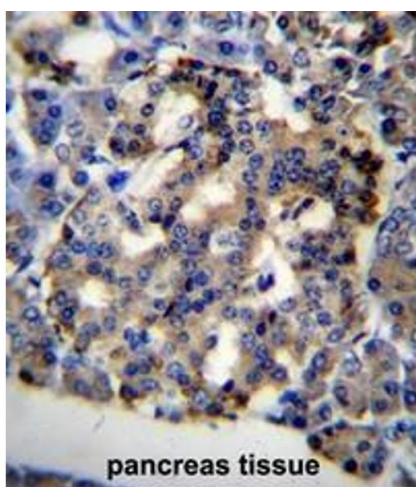
Handling

Format:	Liquid
Concentration:	0.25 mg/mL
Buffer:	PBS containing 0.09 % (W/V) sodium azide as preservative
Preservative:	Sodium azide
Precaution of Use:	This product contains sodium azide: a POISONOUS AND HAZARDOUS SUBSTANCE which should be handled by trained staff only.
Handling Advice:	Avoid repeated freezing and thawing.
Storage:	4 °C/-20 °C
Storage Comment:	Store the antibody undiluted at 2-8 °C for one month or (in aliquots) at -20 °C for longer.



Western Blotting

Image 1. C10orf2 Antibody (C-term) western blot analysis in ZR-75-1 cell line lysates (35µg/lane). This demonstrates the C10orf2 antibody detected the C10orf2 protein (arrow).



Immunohistochemistry (Paraffin-embedded Sections)

Image 2. C10orf2 Antibody (C-term) immunohistochemistry analysis in formalin fixed and paraffin embedded human pancreas tissue followed by peroxidase conjugation of the secondary antibody and DAB staining. This data demonstrates the use of C10orf2 Antibody (C-term) for immunohistochemistry. Clinical relevance has not been evaluated.