

Datasheet for ABIN954087

## anti-Pepsin antibody (N-Term)



[Go to Product page](#)

### 1 Image

#### Overview

Quantity:	0.4 mL
Target:	Pepsin
Binding Specificity:	AA 44-73, N-Term
Reactivity:	Human
Host:	Rabbit
Clonality:	Polyclonal
Conjugate:	This Pepsin antibody is un-conjugated
Application:	Western Blotting (WB), Enzyme Immunoassay (EIA)

#### Product Details

Immunogen:	KLH conjugated synthetic peptide between 44-73 amino acids from the N-terminal region of Human Pepsin Genename: PGA3
Isotype:	Ig Fraction
Specificity:	This antibody recognizes Human Pepsin (N-term).
Purification:	Protein A column, followed by peptide affinity purification

#### Target Details

Target:	Pepsin
Abstract:	<a href="#">Pepsin Products</a>
Background:	PGA3 shows particularly broad specificity, although bonds involving phenylalanine and leucine

## Target Details

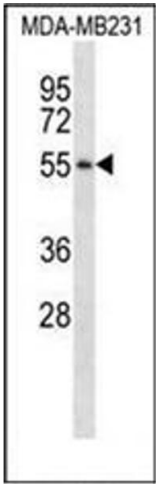
	are preferred, many others are also cleaved to some extent.Synonyms: PGA, PGA3, PGA4, PGA5, Pepsin A, Pepsinogen A, pepsinogen 3 group I, pepsinogen 4 group I, pepsinogen 5 group I
Molecular Weight:	41977 Da
Gene ID:	5222
NCBI Accession:	<a href="#">NP_001073276</a>

## Application Details

Application Notes:	Optimal working dilution should be determined by the investigator.
Restrictions:	For Research Use only

## Handling

Format:	Liquid
Concentration:	0.25 mg/mL
Buffer:	PBS containing 0.09 % (W/V) Sodium Azide as preservative
Preservative:	Sodium azide
Precaution of Use:	This product contains sodium azide: a POISONOUS AND HAZARDOUS SUBSTANCE which should be handled by trained staff only.
Handling Advice:	Avoid repeated freezing and thawing.
Storage:	4 °C/-20 °C
Storage Comment:	Store undiluted at 2-8 °C for one month or (in aliquots) at -20 °C for longer.



Western Blotting

**Image 1.** Western blot analysis of Pepsin Antibody (N-term) Cat.-No AP53266PU-N in MDA-MB231 cell line lysates (35ug/lane). This demonstrates the PGA3 antibody detected the PGA3 protein (arrow).