

Datasheet for ABIN954088
anti-Pepsin antibody (C-Term)

2 Images

[Go to Product page](#)

Overview

Quantity:	0.4 mL
Target:	Pepsin
Binding Specificity:	AA 352-381, C-Term
Reactivity:	Human
Host:	Rabbit
Clonality:	Polyclonal
Conjugate:	This Pepsin antibody is un-conjugated
Application:	Western Blotting (WB), Enzyme Immunoassay (EIA), Immunohistochemistry (Paraffin-embedded Sections) (IHC (p))

Product Details

Immunogen:	KLH conjugated synthetic peptide between 352-381 amino acids from the C-terminal region of Human PGA4 Genename: PGA3
Isotype:	Ig Fraction
Specificity:	This antibody recognizes Human PGA4 (C-term).
Purification:	Protein A column, followed by peptide affinity purification

Target Details

Target:	Pepsin
Abstract:	Pepsin Products

Target Details

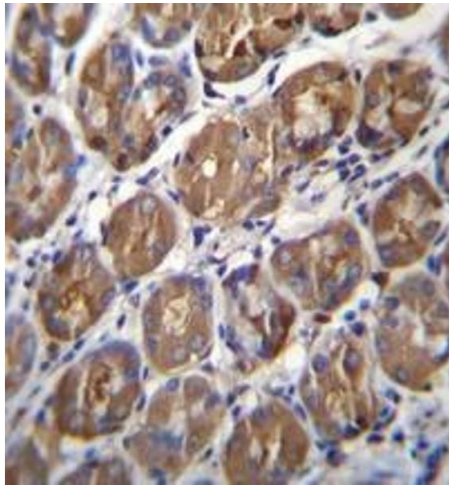
Background:	PGA4 shows particularly broad specificity, although bonds involving phenylalanine and leucine are preferred, many others are also cleaved to some extent.Synonyms: PGA, PGA3, PGA4, PGA5, Pepsin A, Pepsinogen A, pepsinogen 3 group I, pepsinogen 4 group I, pepsinogen 5 group I
Molecular Weight:	41977 Da
Gene ID:	5222
NCBI Accession:	NP_001073276

Application Details

Application Notes:	Optimal working dilution should be determined by the investigator.
Restrictions:	For Research Use only

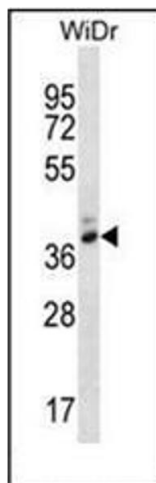
Handling

Format:	Liquid
Concentration:	0.25 mg/mL
Buffer:	PBS containing 0.09 % (W/V) Sodium Azide as preservative
Preservative:	Sodium azide
Precaution of Use:	This product contains sodium azide: a POISONOUS AND HAZARDOUS SUBSTANCE which should be handled by trained staff only.
Handling Advice:	Avoid repeated freezing and thawing.
Storage:	4 °C/-20 °C
Storage Comment:	Store undiluted at 2-8 °C for one month or (in aliquots) at -20 °C for longer.



Immunohistochemistry (Paraffin-embedded Sections)

Image 1. Immunohistochemistry analysis in formalin fixed and paraffin embedded human stomach tissue reacted with PGA4 Antibody (C-term) followed by peroxidase conjugation of the secondary antibody and DAB staining.



Western Blotting

Image 2. Western blot analysis of PGA4 Antibody (C-term) in WiDr cell line lysates (35ug/lane). This demonstrates the PGA4 antibody detected the PGA4 protein (arrow).