

Datasheet for ABIN954098
anti-PEX16 antibody (Middle Region)

3 Images

[Go to Product page](#)

Overview

Quantity:	0.4 mL
Target:	PEX16
Binding Specificity:	AA 254-283, Middle Region
Reactivity:	Human
Host:	Rabbit
Clonality:	Polyclonal
Conjugate:	This PEX16 antibody is un-conjugated
Application:	Western Blotting (WB), Immunohistochemistry (Paraffin-embedded Sections) (IHC (p)), Enzyme Immunoassay (EIA)

Product Details

Immunogen:	KLH conjugated synthetic peptide between 254~283 amino acids from the Center region of human PEX16
Isotype:	Ig Fraction
Specificity:	This antibody recognizes Human Peroxin 16 / PEX16 (Center).
Purification:	Protein A column, followed by peptide affinity purification

Target Details

Target:	PEX16
Alternative Name:	Peroxin 16 / PEX16 (PEX16 Products)

Target Details

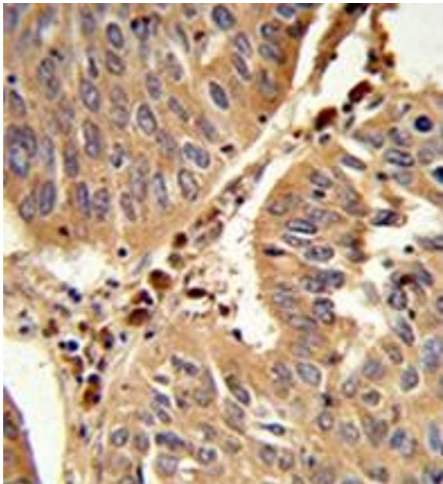
Background:	PEX16 is required for peroxisome membrane biogenesis. It may play a role in early stages of peroxisome assembly and can recruit other peroxisomal proteins, such as PEX3 and PMP34, to de novo peroxisomes derived from the endoplasmic reticulum (ER). It may function as receptor for PEX3 Synonyms: Peroxin-16, Peroxisomal biogenesis factor 16, Peroxisomal membrane protein PEX16
Molecular Weight:	38643 Da
Gene ID:	9409
NCBI Accession:	NP_004804

Application Details

Application Notes:	Optimal working dilution should be determined by the investigator.
Restrictions:	For Research Use only

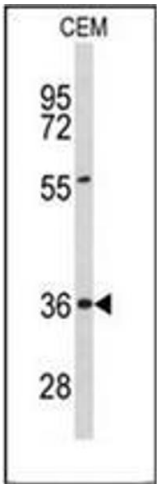
Handling

Format:	Liquid
Concentration:	0.25 mg/mL
Buffer:	PBS containing 0.09 % (W/V) Sodium Azide as preservative
Preservative:	Sodium azide
Precaution of Use:	This product contains sodium azide: a POISONOUS AND HAZARDOUS SUBSTANCE which should be handled by trained staff only.
Handling Advice:	Avoid repeated freezing and thawing.
Storage:	4 °C/-20 °C
Storage Comment:	Store undiluted at 2-8 °C for one month or (in aliquots) at -20 °C for longer.



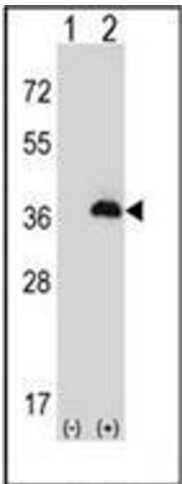
Immunohistochemistry (Paraffin-embedded Sections)

Image 1. Formalin-fixed and paraffin-embedded human lung carcinoma reacted with Peroxin 16 / PEX16 Antibody (Center) followed which was peroxidase-conjugated to the secondary antibody, followed by DAB staining. This data demonstrates the use of this antibody for immunohistochemistry. Clinical relevance has not been evaluated.



Western Blotting

Image 2. Western blot analysis of Peroxin 16 / PEX16 Antibody (Center) in CEM cell line lysates (35ug/lane). PEX16 (arrow) was detected using the purified Pab.



Western Blotting

Image 3. Western blot analysis of PEX16 (arrow) using Peroxin 16 / PEX16 Antibody (Center) Cat.-No AP53262PU-N. 293 cell lysates (2 ug/lane) either nontransfected (Lane 1) or transiently transfected (Lane 2) with the PEX16 gene.