

Datasheet for ABIN954109

anti-PGPEP1 antibody (N-Term)[Go to Product page](#)**1** Image

Overview

Quantity:	0.4 mL
Target:	PGPEP1
Binding Specificity:	AA 29-59, N-Term
Reactivity:	Mouse, Human
Host:	Rabbit
Clonality:	Polyclonal
Conjugate:	This PGPEP1 antibody is un-conjugated
Application:	Western Blotting (WB), Enzyme Immunoassay (EIA)

Product Details

Immunogen:	KLH conjugated synthetic peptide between 29-59 amino acids from the N-terminal region of human PGPEP1
Isotype:	Ig Fraction
Specificity:	This antibody recognizes Human and Mouse PGPEP1 (N-term).
Purification:	Protein A column, followed by peptide affinity purification

Target Details

Target:	PGPEP1
Alternative Name:	PGPEP1 (PGPEP1 Products)
Background:	Pyroglutamyl peptidase I (EC 3.4.19.3) catalyzes the hydrolysis of N-terminal pyroglutamyl

Target Details

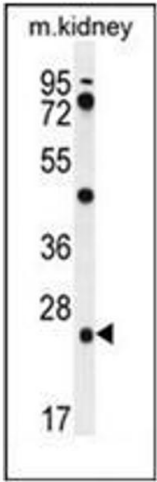
	residues from oligopeptides and proteins.Synonyms: 5-oxopropyl-peptidase, PAP-I, PGP-I, PGPI, Pyroglutamyl-peptidase 1, Pyrrolidone-carboxylate peptidase
Molecular Weight:	23138 Da
Gene ID:	54858
NCBI Accession:	NP_060182

Application Details

Application Notes:	Optimal working dilution should be determined by the investigator.
Restrictions:	For Research Use only

Handling

Format:	Liquid
Concentration:	0.25 mg/mL
Buffer:	PBS containing 0.09 % (W/V) Sodium Azide as preservative
Preservative:	Sodium azide
Precaution of Use:	This product contains sodium azide: a POISONOUS AND HAZARDOUS SUBSTANCE which should be handled by trained staff only.
Handling Advice:	Avoid repeated freezing and thawing.
Storage:	4 °C/-20 °C
Storage Comment:	Store undiluted at 2-8 °C for one month or (in aliquots) at -20 °C for longer.



Western Blotting

Image 1. Western blot analysis of PGPEP1 Antibody (N-term) in mouse kidney tissue lysates (35ug/lane). This demonstrates the PGPEP1 antibody detected the PGPEP1 protein (arrow).