

Datasheet for ABIN954112
anti-PHACTR3 antibody (N-Term)

2 Images

[Go to Product page](#)

Overview

Quantity:	0.4 mL
Target:	PHACTR3
Binding Specificity:	AA 24-54, N-Term
Reactivity:	Human
Host:	Rabbit
Clonality:	Polyclonal
Application:	Western Blotting (WB), Immunohistochemistry (Paraffin-embedded Sections) (IHC (p)), Enzyme Immunoassay (EIA)

Product Details

Immunogen:	KLH conjugated synthetic peptide between 24-54 amino acids from the N-terminal region of human PHACTR3
Isotype:	Ig Fraction
Specificity:	This antibody recognizes Human PHACTR3 (N-term).
Purification:	Protein A column, followed by peptide affinity purification

Target Details

Target:	PHACTR3
Alternative Name:	PHACTR3 (PHACTR3 Products)
Background:	The protein encoded by this gene is associated with the nuclear scaffold in proliferating cells. It was found to bind to the catalytic subunit of protein phosphatase-1 (PP1) and inhibit PP1

Target Details

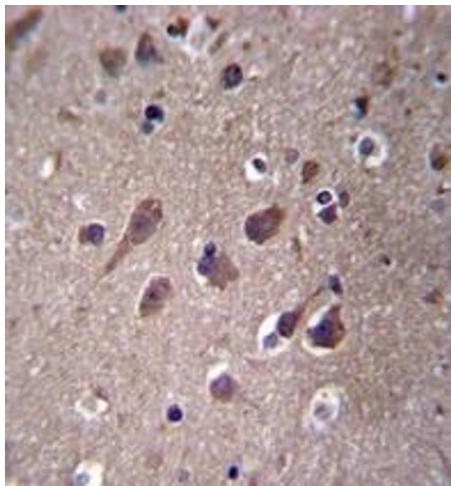
	activity, suggesting that this protein may function as a regulatory subunit of PP1. Alternative splicing at this locus results in several transcript variants encoding different isoforms.Synonyms: C20orf101, Phosphatase and actin regulator 3, SCAPIN1, Scaffold-associated PP1-inhibiting protein, Scapinin
Molecular Weight:	62552 Da
Gene ID:	116154
NCBI Accession:	NP_001186434

Application Details

Application Notes:	Optimal working dilution should be determined by the investigator.
Restrictions:	For Research Use only

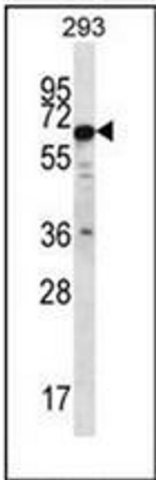
Handling

Format:	Liquid
Concentration:	0.25 mg/mL
Buffer:	PBS containing 0.09 % (W/V) Sodium Azide as preservative
Preservative:	Sodium azide
Precaution of Use:	This product contains sodium azide: a POISONOUS AND HAZARDOUS SUBSTANCE which should be handled by trained staff only.
Handling Advice:	Avoid repeated freezing and thawing.
Storage:	4 °C/-20 °C
Storage Comment:	Store undiluted at 2-8 °C for one month or (in aliquots) at -20 °C for longer.



Immunohistochemistry (Paraffin-embedded Sections)

Image 1. Immunohistochemistry analysis in formalin fixed and paraffin embedded human brain tissue reacted with PHACTR3 Antibody (N-term) followed which was peroxidase conjugated to the secondary antibody and followed by DAB staining. This data demonstrates the use of PHACTR3 Antibody (N-term) for immunohistochemistry. Clinical relevance has not been evaluated.



Western Blotting

Image 2. Western blot analysis of PHACTR3 Antibody