

Datasheet for ABIN954113

**anti-PHACTR4 antibody (C-Term)**[Go to Product page](#)**1** Image

## Overview

Quantity:	0.4 mL
Target:	PHACTR4
Binding Specificity:	AA 543-572, C-Term
Reactivity:	Human, Mouse
Host:	Rabbit
Clonality:	Polyclonal
Conjugate:	This PHACTR4 antibody is un-conjugated
Application:	Western Blotting (WB), Enzyme Immunoassay (EIA)

## Product Details

Immunogen:	KLH conjugated synthetic peptide between 543~572 amino acids from the C-terminal region of human PHCTAR4
Isotype:	Ig Fraction
Specificity:	This antibody recognizes Human and Mouse PHACTRA (C-term).
Purification:	Protein A column, followed by peptide affinity purification

## Target Details

Target:	PHACTR4
Alternative Name:	PHACTR4 ( <a href="#">PHACTR4 Products</a> )
Background:	This gene encodes a member of the phosphatase and actin regulator (PHACTR) family. Other

## Target Details

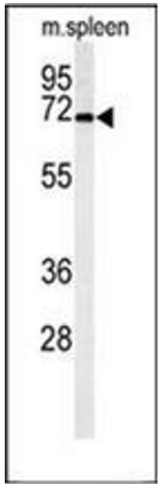
	PHACTR family members have been shown to inhibit protein phosphatase 1 (PP1) activity, and the homolog of this gene in the mouse has been shown to interact with actin and PP1. Multiple transcript variants encoding different isoforms have been found for this gene.Synonyms: PRO2963, Phosphatase and actin regulator 4
Molecular Weight:	78211 Da
Gene ID:	65979
NCBI Accession:	<a href="#">NP_001041648</a>
Pathways:	<a href="#">Tube Formation</a>

## Application Details

Application Notes:	Optimal working dilution should be determined by the investigator.
Restrictions:	For Research Use only

## Handling

Format:	Liquid
Concentration:	0.25 mg/mL
Buffer:	PBS containing 0.09 % (W/V) Sodium Azide as preservative
Preservative:	Sodium azide
Precaution of Use:	This product contains sodium azide: a POISONOUS AND HAZARDOUS SUBSTANCE which should be handled by trained staff only.
Handling Advice:	Avoid repeated freezing and thawing.
Storage:	4 °C/-20 °C
Storage Comment:	Store undiluted at 2-8 °C for one month or (in aliquots) at -20 °C for longer.



Western Blotting

**Image 1.** Western blot analysis of PHACTR4 Antibody (C-term) in mouse spleen tissue lysates (35ug/lane). PHACTR4 (arrow) was detected using the purified Pab.