



[Go to Product page](#)

Datasheet for ABIN954117  
**anti-PHF12 antibody (C-Term)**

2 Images

Overview

Quantity:	0.4 mL
Target:	PHF12
Binding Specificity:	AA 838-866, C-Term
Reactivity:	Mouse, Human
Host:	Rabbit
Clonality:	Polyclonal
Conjugate:	This PHF12 antibody is un-conjugated
Application:	Western Blotting (WB), Immunohistochemistry (Paraffin-embedded Sections) (IHC (p)), Enzyme Immunoassay (EIA)

Product Details

Immunogen:	KLH conjugated synthetic peptide between 838-866 amino acids from the C-terminal region of human PHF12 / Pf1
Isotype:	Ig Fraction
Specificity:	This antibody recognizes Human and Mouse PHF12 / Pf1 (C-term).
Purification:	Protein A column, followed by peptide affinity purification

Target Details

Target:	PHF12
Alternative Name:	PHF12 / Pf1 ( <a href="#">PHF12 Products</a> )

## Target Details

---

**Background:** Inhibins and activins inhibit and activate, respectively, the secretion of follitropin by the pituitary gland. Inhibins/activins are involved in regulating a number of diverse functions such as hypothalamic and pituitary hormone secretion, gonadal hormone secretion, germ cell development and maturation, erythroid differentiation, insulin secretion, nerve cell survival, embryonic axial development or bone growth, depending on their subunit composition. Inhibins appear to oppose the functions of activins  
Synonyms: KIAA1523, PHD factor 1, PHD finger protein 12

**Molecular Weight:** 109698 Da

**Gene ID:** 57649

**NCBI Accession:** [NP\\_001028733](#)

## Application Details

---

**Application Notes:** Optimal working dilution should be determined by the investigator.

**Restrictions:** For Research Use only

## Handling

---

**Format:** Liquid

**Concentration:** 0.25 mg/mL

**Buffer:** PBS containing 0.09 % (W/V) Sodium Azide as preservative

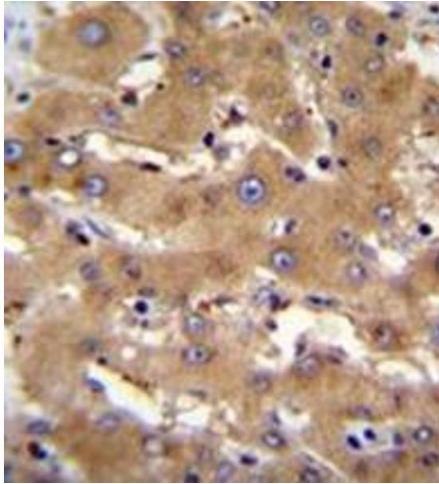
**Preservative:** Sodium azide

**Precaution of Use:** This product contains sodium azide: a POISONOUS AND HAZARDOUS SUBSTANCE which should be handled by trained staff only.

**Handling Advice:** Avoid repeated freezing and thawing.

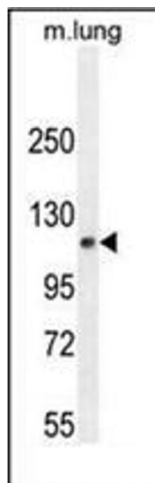
**Storage:** 4 °C/-20 °C

**Storage Comment:** Store undiluted at 2-8 °C for one month or (in aliquots) at -20 °C for longer.



### Immunohistochemistry (Paraffin-embedded Sections)

**Image 1.** Immunohistochemistry analysis in formalin fixed and paraffin embedded human liver tissue reacted with PHF12 Antibody (C-term) followed which was peroxidase conjugated to the secondary antibody and followed by DAB staining. This data demonstrates the use of PHF12 Antibody (C-term) for immunohistochemistry. Clinical relevance has not been evaluated



### Western Blotting

**Image 2.** Western blot analysis of PHF12 Antibody