



[Go to Product page](#)

Datasheet for ABIN954119

anti-PHF20 antibody (N-Term)

2 Images

Overview

Quantity:	0.4 mL
Target:	PHF20
Binding Specificity:	AA 130-159, N-Term
Reactivity:	Human
Host:	Rabbit
Clonality:	Polyclonal
Conjugate:	This PHF20 antibody is un-conjugated
Application:	Western Blotting (WB), Immunohistochemistry (Paraffin-embedded Sections) (IHC (p)), Enzyme Immunoassay (EIA)

Product Details

Immunogen:	KLH conjugated synthetic peptide between 130-159 amino acids from the N-terminal region of human PHF20
Isotype:	Ig Fraction
Specificity:	This antibody recognizes Human PHF20 (N-term).
Purification:	Protein A column, followed by peptide affinity purification

Target Details

Target:	PHF20
Alternative Name:	PHF20 (PHF20 Products)

Target Details

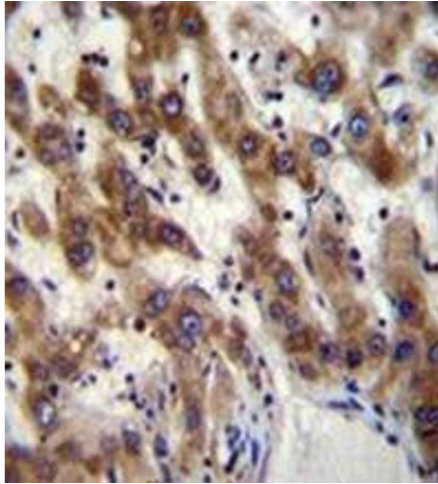
Background:	PHF20 is possible a transcription factor.Synonyms: C20orf104, GLEA2, Glioma-expressed antigen 2, HCA58, Hepatocellular carcinoma-associated antigen 58, NZF, Novel zinc finger protein, PHD finger protein 20, TZP, Transcription factor TZP
Molecular Weight:	115386 Da
Gene ID:	51230
NCBI Accession:	NP_057520

Application Details

Application Notes:	Optimal working dilution should be determined by the investigator.
Restrictions:	For Research Use only

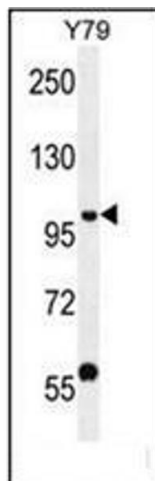
Handling

Format:	Liquid
Concentration:	0.25 mg/mL
Buffer:	PBS containing 0.09 % (W/V) Sodium Azide as preservative
Preservative:	Sodium azide
Precaution of Use:	This product contains sodium azide: a POISONOUS AND HAZARDOUS SUBSTANCE which should be handled by trained staff only.
Handling Advice:	Avoid repeated freezing and thawing.
Storage:	4 °C/-20 °C
Storage Comment:	Store undiluted at 2-8 °C for one month or (in aliquots) at -20 °C for longer.



Immunohistochemistry (Paraffin-embedded Sections)

Image 1. Immunohistochemistry analysis in formalin fixed and paraffin embedded human liver tissue reacted with PHF20 Antibody (N-term) followed which was peroxidase conjugated to the secondary antibody and followed by DAB staining. This data demonstrates the use of PHF20 Antibody (N-term) for immunohistochemistry. Clinical relevance has not been evaluated.



Western Blotting

Image 2. Western blot analysis of PHF20 Antibody (N-term) in Y79 cell line lysates (35ug/lane). This demonstrates the PHF20 antibody detected the PHF20 protein (arrow).