

Datasheet for ABIN954132

anti-PHYHD1 antibody (C-Term)[Go to Product page](#)**1** Image

Overview

Quantity:	0.4 mL
Target:	PHYHD1
Binding Specificity:	AA 231-260, C-Term
Reactivity:	Human
Host:	Rabbit
Clonality:	Polyclonal
Conjugate:	This PHYHD1 antibody is un-conjugated
Application:	Western Blotting (WB), Enzyme Immunoassay (EIA)

Product Details

Immunogen:	Synthetic peptide - KLH conjugated - corresponding to the C-terminal region (between 231-260aa) of human PHYHD1.
Isotype:	Ig Fraction
Specificity:	This antibody recognizes PHYHD1 at C-term.
Cross-Reactivity (Details):	Species reactivity (tested):Human
Purification:	Purified through a Protein A column followed by peptide affinity purification

Target Details

Target:	PHYHD1
Alternative Name:	PHYHD1 (PHYHD1 Products)

Target Details

Background:	PHYHD1 probably acts as alpha-ketoglutarate-dependent dioxygenase (By similarity).Synonyms: MGC16638, Phytanoyl-CoA dioxygenase domain-containing protein 1
Gene ID:	254295
NCBI Accession:	NP_001094346

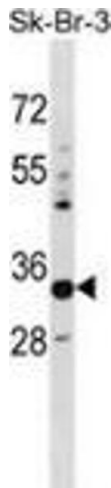
Application Details

Application Notes:	Optimal working dilution should be determined by the investigator.
Restrictions:	For Research Use only

Handling

Format:	Liquid
Concentration:	0.25 mg/mL
Buffer:	PBS with 0.09 % (W/V) Sodium azide
Preservative:	Sodium azide
Precaution of Use:	This product contains sodium azide: a POISONOUS AND HAZARDOUS SUBSTANCE which should be handled by trained staff only.
Handling Advice:	Avoid repeated freezing and thawing.
Storage:	4 °C/-20 °C
Storage Comment:	Store undiluted at 2-8 °C for one month or (in aliquots) at -20 °C for longer.

Images



Western Blotting

Image 1. Western blot analysis in SK-BR-3 cell line lysates (35ug/lane) using PHYHD1 Antibody . This demonstrates the PHYHD1 antibody detected the PHYHD1 protein (arrow).