



[Go to Product page](#)

Datasheet for ABIN954137
anti-PIGN antibody (N-Term)

1 Image

Overview

Quantity:	0.4 mL
Target:	PIGN
Binding Specificity:	AA 213-243, N-Term
Reactivity:	Human, Mouse
Host:	Rabbit
Clonality:	Polyclonal
Conjugate:	This PIGN antibody is un-conjugated
Application:	Western Blotting (WB), Enzyme Immunoassay (EIA)

Product Details

Immunogen:	Synthetic peptide - KLH conjugated - corresponding to the N-terminal region (between 213-243aa) of human PIGN .
Isotype:	Ig Fraction
Specificity:	This antibody recognizes PIGN at N-term.
Cross-Reactivity (Details):	Species reactivity (tested):Human, Mouse
Purification:	Purified through a Protein A column followed by peptide affinity purification

Target Details

Target:	PIGN
Alternative Name:	PIGN (PIGN Products)

Target Details

Background: PIGN is involved in glycosylphosphatidylinositol (GPI)-anchor biosynthesis. The GPI-anchor is a glycolipid found on many blood cells and serves to anchor proteins to the cell surface. This protein is expressed in the endoplasmic reticulum and transfers phosphoethanolamine (EtNP) to the first mannose of the GPI anchor. Synonyms: GPI ethanolamine phosphate transferase 1, MCD4, PIG-N, Phosphatidylinositol-glycan biosynthesis class N protein

Gene ID: 23556

NCBI Accession: [NP_036459](#)

Pathways: [Inositol Metabolic Process](#)

Application Details

Application Notes: Optimal working dilution should be determined by the investigator.

Restrictions: For Research Use only

Handling

Format: Liquid

Concentration: 0.25 mg/mL

Buffer: PBS with 0.09 % (W/V) Sodium azide

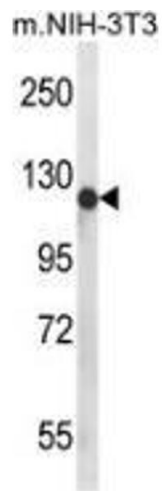
Preservative: Sodium azide

Precaution of Use: This product contains sodium azide: a POISONOUS AND HAZARDOUS SUBSTANCE which should be handled by trained staff only.

Handling Advice: Avoid repeated freezing and thawing.

Storage: 4 °C/-20 °C

Storage Comment: Store undiluted at 2-8 °C for one month or (in aliquots) at -20 °C for longer.



Western Blotting

Image 1. Western blot analysis of PIGN (arrow) in mouse NIH-3T3 cell line lysates (35ug/lane) using PIGN Antibody (N-term).