

Datasheet for ABIN954147  
**anti-PNN antibody (Middle Region)**

## 3 Images

[Go to Product page](#)

## Overview

Quantity:	0.4 mL
Target:	PNN
Binding Specificity:	AA 216-248, Middle Region
Reactivity:	Human
Host:	Rabbit
Clonality:	Polyclonal
Conjugate:	This PNN antibody is un-conjugated
Application:	Western Blotting (WB), Immunofluorescence (IF), Immunohistochemistry (Paraffin-embedded Sections) (IHC (p)), Enzyme Immunoassay (EIA)

## Product Details

Immunogen:	KLH conjugated synthetic peptide between 216-248 amino acids from the Central region of human PNN.
Isotype:	Ig Fraction
Specificity:	This antibody recognizes Human Pinin / PNN (Center).
Purification:	Affinity Chromatography on Protein A

## Target Details

Target:	PNN
Alternative Name:	Pinin / PNN ( <a href="#">PNN Products</a> )

## Target Details

**Background:** Transcriptional activator binding to the E-box 1 core sequence of the E-cadherin promoter gene, the core-binding sequence is 5'CAGGTG-3'. Capable of reversing CTBP1-mediated transcription repression. Component of a splicing-dependent multiprotein exon junction complex (EJC) deposited at splice junction on mRNAs. The EJC is a dynamic structure consisting of a few core proteins and several more peripheral nuclear and cytoplasmic associated factors that join the complex only transiently either during EJC assembly or during subsequent mRNA metabolism. Participates in the regulation of alternative pre-mRNA splicing. Associates to spliced mRNA within 60 nt upstream of the 5'-splice sites. Involved in the establishment and maintenance of epithelia cell-cell adhesion. Potential tumor suppressor for renal cell carcinoma. Synonyms: 140 kDa nuclear and cell adhesion-related phosphoprotein, DRS, DRSP, Desmosome-associated protein, Domain-rich serine protein, MEMA, Nuclear protein SDK3

**Molecular Weight:** 81614 Da

**Gene ID:** 5411

**NCBI Accession:** [NP\\_002678](#)

## Application Details

**Application Notes:** Optimal working dilution should be determined by the investigator.

**Restrictions:** For Research Use only

## Handling

**Format:** Liquid

**Concentration:** 0.25 mg/mL

**Buffer:** PBS containing 0.09 % (W/V) Sodium Azide as preservative

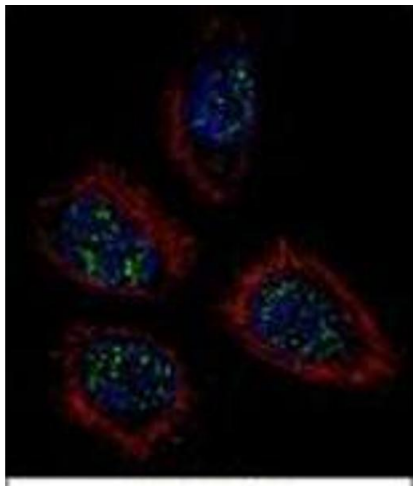
**Preservative:** Sodium azide

**Precaution of Use:** This product contains sodium azide: a POISONOUS AND HAZARDOUS SUBSTANCE which should be handled by trained staff only.

**Handling Advice:** Avoid repeated freezing and thawing.

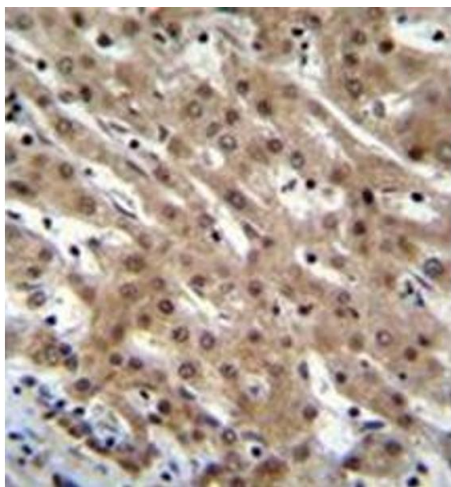
**Storage:** 4 °C/-20 °C

**Storage Comment:** Store undiluted at 2-8 °C for one month or (in aliquots) at -20 °C for longer.



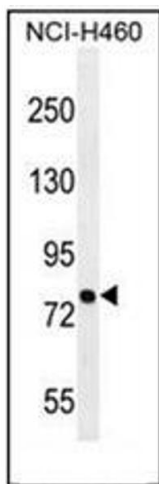
### Immunofluorescence

**Image 1.** Confocal immunofluorescent analysis of Pinin / PNN Antibody with NCI-H460 cell followed by Alexa Fluor 488-conjugated goat anti-rabbit IgG (green). Actin filaments have been labeled with Alexa Fluor 555 phalloidin (red). DAPI was used to stain the cell nuclear (blue).



### Immunohistochemistry (Paraffin-embedded Sections)

**Image 2.** Formalin fixed and paraffin embedded human liver tissue reacted with Pinin / PNN Antibody followed by peroxidase conjugation of the secondary antibody and DAB staining.



### Western Blotting

**Image 3.** Western blot analysis of Pinin / PNN Antibody in NCI-H460 cell line lysates (35ug/lane). This demonstrates the PNN antibody detected the PNN protein (arrow).