

Datasheet for ABIN954150

anti-PIP5KL1 antibody (N-Term)**3** Images[Go to Product page](#)

Overview

Quantity:	0.4 mL
Target:	PIP5KL1
Binding Specificity:	AA 64-94, N-Term
Reactivity:	Human
Host:	Rabbit
Clonality:	Polyclonal
Conjugate:	This PIP5KL1 antibody is un-conjugated
Application:	Western Blotting (WB), Immunofluorescence (IF), Immunohistochemistry (Paraffin-embedded Sections) (IHC (p)), Enzyme Immunoassay (EIA)

Product Details

Immunogen:	KLH conjugated synthetic peptide between 64-94 amino acids from the N-terminal region of human PIP5KL1
Isotype:	Ig Fraction
Specificity:	This antibody recognizes Human PIP5KL1 (N-term).
Purification:	Protein A column, followed by peptide affinity purification

Target Details

Target:	PIP5KL1
Alternative Name:	PIP5KL1 (PIP5KL1 Products)

Target Details

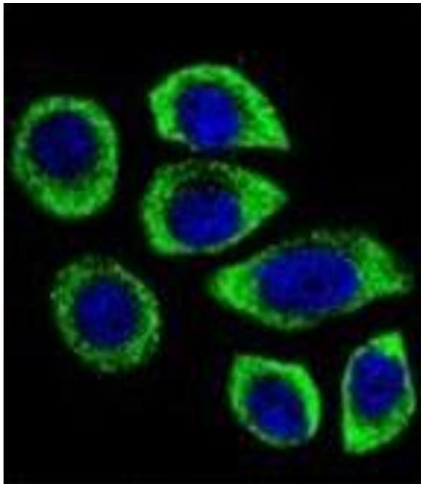
Background:	PIP5KL1 is a phosphoinositide kinase-like protein that lacks intrinsic lipid kinase activity but associates with type I PIPKs (see PIP5K1A, MIM 603275) and may play a role in localization of PIPK activity (Chang et al., 2004 [PubMed 14701839]).[supplied by OMIM].Synonyms: PI(4)P 5-kinase-like protein 1, Phosphatidylinositol-4-phosphate 5-kinase-like protein 1, PtdIns(4)P-5-kinase-like protein 1
Molecular Weight:	44572 Da
Gene ID:	138429
NCBI Accession:	NP_001128691
Pathways:	Inositol Metabolic Process

Application Details

Application Notes:	Optimal working dilution should be determined by the investigator.
Restrictions:	For Research Use only

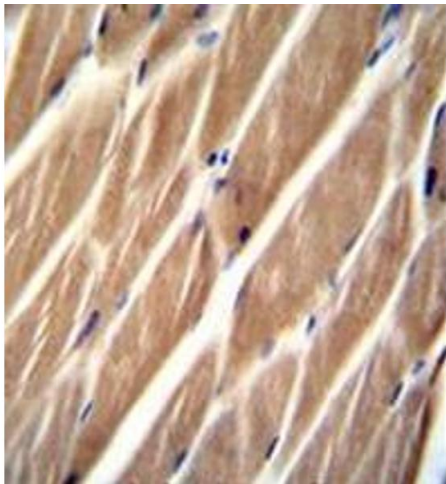
Handling

Format:	Liquid
Concentration:	0.25 mg/mL
Buffer:	PBS containing 0.09 % (W/V) Sodium Azide as preservative
Preservative:	Sodium azide
Precaution of Use:	This product contains sodium azide: a POISONOUS AND HAZARDOUS SUBSTANCE which should be handled by trained staff only.
Handling Advice:	Avoid repeated freezing and thawing.
Storage:	4 °C/-20 °C
Storage Comment:	Store undiluted at 2-8 °C for one month or (in aliquots) at -20 °C for longer.



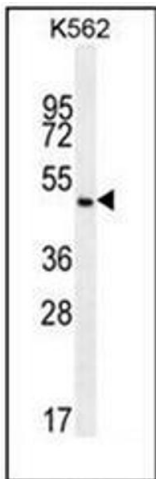
Immunofluorescence

Image 1. Confocal immunofluorescent analysis of PIP5KL1 Antibody (N-term) Cat.-No AP53309PU-N with U-251MG cell followed by Alexa Fluor 488-conjugated goat anti-rabbit IgG (green). DAPI was used to stain the cell nuclear (blue).



Immunohistochemistry (Paraffin-embedded Sections)

Image 2. Immunohistochemistry analysis in formalin fixed and paraffin embedded human skeletal muscle reacted with PIP5KL1 Antibody (N-term) followed by peroxidase conjugation of the secondary antibody and DAB staining.



Western Blotting

Image 3. Western blot analysis of PIP5KL1 Antibody (N-term) in K562 cell line lysates (35ug/lane). This demonstrates the PIP5KL1 antibody detected the PIP5KL1 protein (arrow).