



[Go to Product page](#)

Datasheet for ABIN954157  
**anti-PLEKHG1 antibody (C-Term)**

2 Images

Overview

Quantity:	0.4 mL
Target:	PLEKHG1
Binding Specificity:	AA 1276-1306, C-Term
Reactivity:	Human
Host:	Rabbit
Clonality:	Polyclonal
Conjugate:	This PLEKHG1 antibody is un-conjugated
Application:	Western Blotting (WB), Immunohistochemistry (Paraffin-embedded Sections) (IHC (p)), Enzyme Immunoassay (EIA)

Product Details

Immunogen:	KLH conjugated synthetic peptide between 1276-1306 amino acids from the C-terminal region of human PKHG1
Isotype:	Ig Fraction
Specificity:	This antibody recognizes Human PKHG1 (C-term).
Purification:	Protein A column, followed by peptide affinity purification

Target Details

Target:	PLEKHG1
Abstract:	<a href="#">PLEKHG1 Products</a>

## Target Details

Background:	Synonyms: KIAA1209, PLEKHG1, Pleckstrin homology domain-containing family G member 1
Molecular Weight:	155439 Da
Gene ID:	57480
NCBI Accession:	<a href="#">NP_001025055</a>

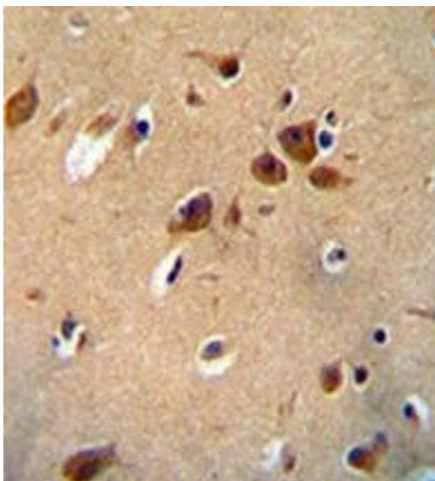
## Application Details

Application Notes:	Optimal working dilution should be determined by the investigator.
Restrictions:	For Research Use only

## Handling

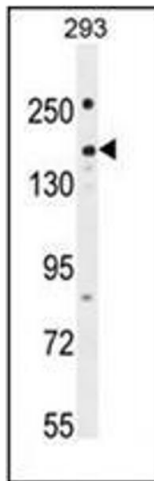
Format:	Liquid
Concentration:	0.25 mg/mL
Buffer:	PBS containing 0.09 % (W/V) Sodium Azide as preservative
Preservative:	Sodium azide
Precaution of Use:	This product contains sodium azide: a POISONOUS AND HAZARDOUS SUBSTANCE which should be handled by trained staff only.
Handling Advice:	Avoid repeated freezing and thawing.
Storage:	4 °C/-20 °C
Storage Comment:	Store undiluted at 2-8 °C for one month or (in aliquots) at -20 °C for longer.

## Images



### Immunohistochemistry (Paraffin-embedded Sections)

**Image 1.** Immunohistochemistry analysis in formalin fixed and paraffin embedded human brain tissue reacted with PKHG1 Antibody (C-term) followed which was peroxidase conjugated to the secondary antibody and followed by DAB staining. This data demonstrates the use of the PKHG1 Antibody (C-term) for immunohistochemistry. Clinical relevance has not been evaluated



### Western Blotting

**Image 2.** Western blot analysis of PKHG1 Antibody (C-term) in 293 cell line lysates (35ug/lane). This demonstrates the PKHG1 antibody detected the PKHG1 protein (arrow).