



[Go to Product page](#)

Datasheet for ABIN954162

anti-PLA2G2D antibody (C-Term)

3 Images

Overview

Quantity:	0.4 mL
Target:	PLA2G2D
Binding Specificity:	AA 112-138, C-Term
Reactivity:	Human
Host:	Rabbit
Clonality:	Polyclonal
Conjugate:	This PLA2G2D antibody is un-conjugated
Application:	Western Blotting (WB), Flow Cytometry (FACS), Immunohistochemistry (Paraffin-embedded Sections) (IHC (p)), Enzyme Immunoassay (EIA)

Product Details

Immunogen:	KLH conjugated synthetic peptide between 112-138 amino acids from the C-terminal region of human PLA2G2D
Isotype:	Ig Fraction
Specificity:	This antibody recognizes Human PLA2G2D (C-term).
Purification:	Protein A column, followed by peptide affinity purification

Target Details

Target:	PLA2G2D
Alternative Name:	PLA2G2D (PLA2G2D Products)

Target Details

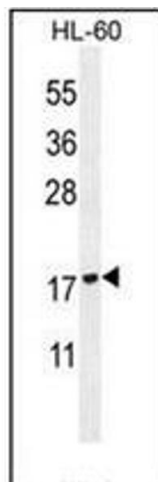
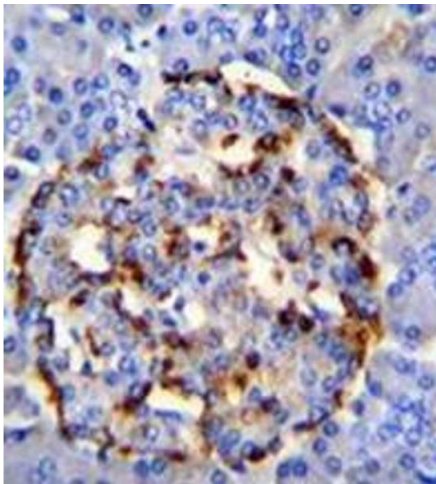
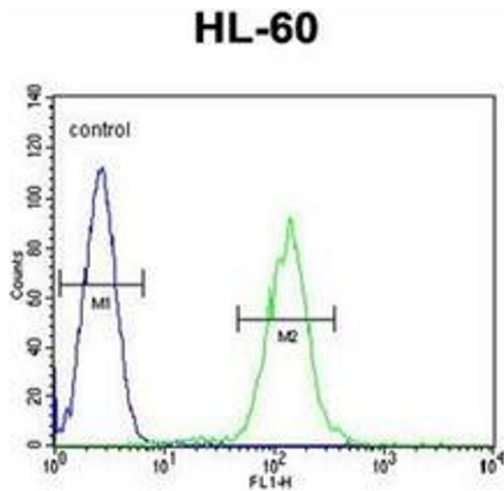
Background:	Transposase-derived protein that may have nuclease activity (Potential). Does not have transposase activity.Synonyms: GIID sPLA2, Group IID secretory phospholipase A2, PLA2IID, Phosphatidylcholine 2-acylhydrolase 2D, Phospholipase A2 group IID, SPLASH, Secretory-type PLA stroma-associated homolog, sPLA2-IID
Molecular Weight:	16546 Da
Gene ID:	26279
NCBI Accession:	NP_036532
Pathways:	Inositol Metabolic Process

Application Details

Application Notes:	Optimal working dilution should be determined by the investigator.
Restrictions:	For Research Use only

Handling

Format:	Liquid
Concentration:	0.25 mg/mL
Buffer:	PBS containing 0.09 % (W/V) Sodium Azide as preservative
Preservative:	Sodium azide
Precaution of Use:	This product contains sodium azide: a POISONOUS AND HAZARDOUS SUBSTANCE which should be handled by trained staff only.
Handling Advice:	Avoid repeated freezing and thawing.
Storage:	4 °C/-20 °C
Storage Comment:	Store undiluted at 2-8 °C for one month or (in aliquots) at -20 °C for longer.



Flow Cytometry

Image 1. Flow cytometric analysis of HL-60 cells using PLA2G2D Antibody (C-term) Cat.-No AP53324PU-N (right histogram) compared to a negative control cell (left histogram). FITC-conjugated goat-anti-rabbit secondary antibodies were used for the analysis.

Immunohistochemistry (Paraffin-embedded Sections)

Image 2. Immunohistochemistry analysis in formalin fixed and paraffin embedded human pancreas tissue reacted with PLA2G2D Antibody (C-term) followed which peroxidase conjugated to the secondary antibody and was followed by DAB staining. This data demonstrates the use of PLA2G2D Antibody (C-term) for immunohistochemistry. Clinical relevance has not been evaluated.

Western Blotting

Image 3. Western blot analysis of PLA2G2D Antibody (C-term) in HL-60 cell line lysates (35ug/lane). This demonstrates the PLA2G2D antibody detected the PLA2G2D protein (arrow).