

Datasheet for ABIN954164

anti-PLA2G6 antibody (Middle Region)

4 Images

[Go to Product page](#)

Overview

Quantity:	0.4 mL
Target:	PLA2G6
Binding Specificity:	AA 558-588, Middle Region
Reactivity:	Human
Host:	Rabbit
Clonality:	Polyclonal
Conjugate:	This PLA2G6 antibody is un-conjugated
Application:	Western Blotting (WB), Immunohistochemistry (Paraffin-embedded Sections) (IHC (p)), Immunofluorescence (IF), Flow Cytometry (FACS)

Product Details

Immunogen:	Synthetic peptide - KLH conjugated - corresponding to the central region (between 558-588aa) of human PLA2G6.
Isotype:	Ig Fraction
Specificity:	This antibody recognizes PLA2G6.
Cross-Reactivity (Details):	Species reactivity (tested):Human
Purification:	Prepared by Saturated Ammonium Sulfate (SAS) precipitation followed by dialysis against PBS

Target Details

Target:	PLA2G6
---------	--------

Target Details

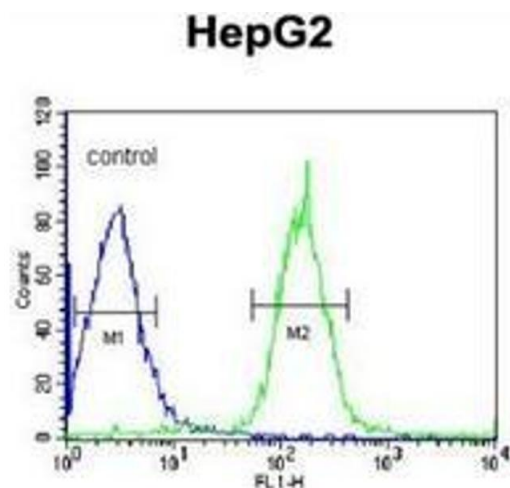
Alternative Name:	PLA2G6 (PLA2G6 Products)
Background:	The protein encoded by the PLA2G6 gene is an A2 phospholipase, a class of enzyme that catalyzes the release of fatty acids from phospholipids. The encoded protein may play a role in phospholipid remodelling, arachidonic acid release, leukotriene and prostaglandin synthesis, fas-mediated apoptosis, and transmembrane ion flux in glucose-stimulated B-cells.Synonyms: 85 kDa calcium-independent phospholipase A2, Cal-PLA2, GVI PLA2, Group VI phospholipase A2, IPLA2, PARK14
Gene ID:	8398
NCBI Accession:	NP_001004426
Pathways:	Positive Regulation of Peptide Hormone Secretion

Application Details

Application Notes:	Optimal working dilution should be determined by the investigator.
Restrictions:	For Research Use only

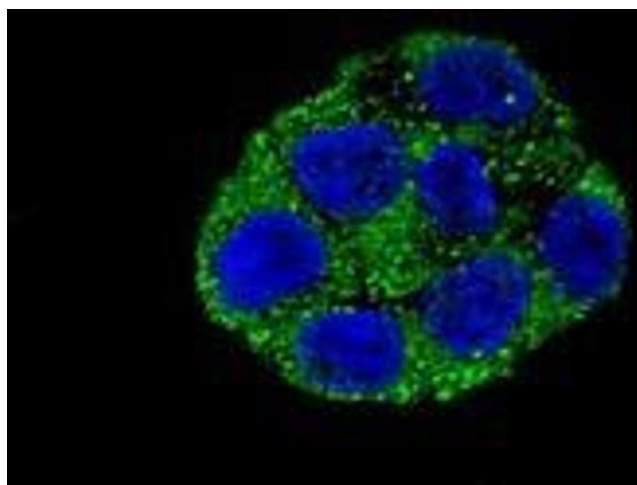
Handling

Format:	Liquid
Concentration:	0.25 mg/mL
Buffer:	PBS with 0.09 % (W/V) Sodium azide
Preservative:	Sodium azide
Precaution of Use:	This product contains sodium azide: a POISONOUS AND HAZARDOUS SUBSTANCE which should be handled by trained staff only.
Handling Advice:	Avoid repeated freezing and thawing.
Storage:	4 °C/-20 °C
Storage Comment:	Store undiluted at 2-8 °C for one month or (in aliquots) at -20 °C for longer.



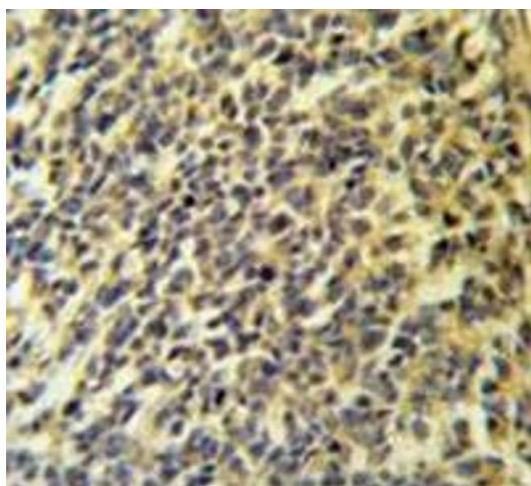
Flow Cytometry

Image 1. Flow cytometric analysis of HepG2 cells (right histogram) compared to a negative control cell (left histogram) using PLA2G6 Antibody, followed by FITC-conjugated goat-anti-rabbit secondary antibodies.



Immunofluorescence

Image 2. Confocal immunofluorescent analysis with HepG2 cell using PLA2G6 Antibody, followed by Alexa Fluor® 488-conjugated goat anti-rabbit IgG (green). DAPI was used to stain the cell nuclear (blue).



Immunohistochemistry (Paraffin-embedded Sections)

Image 3. Immunohistochemistry analysis in testis carcinoma (Formalin-fixed, Paraffin-embedded) using PLA2G6 Antibody, followed by peroxidase conjugated secondary antibody and DAB staining. This data demonstrates the use of the PLA2G6 antibody for IHC. Clinical relevance has not been evaluated.

Please check the [product details page](#) for more images. Overall 4 images are available for ABIN954164.