

Datasheet for ABIN954165

**anti-PLA2G7 antibody (Middle Region)****3** Images[Go to Product page](#)

## Overview

Quantity:	0.4 mL
Target:	PLA2G7 (Lp-PLA2)
Binding Specificity:	AA 207-236, Middle Region
Reactivity:	Human
Host:	Rabbit
Clonality:	Polyclonal
Conjugate:	This PLA2G7 antibody is un-conjugated
Application:	Western Blotting (WB), Flow Cytometry (FACS), Immunohistochemistry (Paraffin-embedded Sections) (IHC (p))

## Product Details

Immunogen:	Synthetic peptide - KLH conjugated - corresponding to the central region (between 207-236aa) of human PLA2G7.
Isotype:	Ig Fraction
Specificity:	This antibody recognizes PLA2G7.
Cross-Reactivity (Details):	Species reactivity (tested): Human
Purification:	Purified through a Protein A column followed by peptide affinity purification

## Target Details

Target:	PLA2G7 (Lp-PLA2)
---------	------------------

## Target Details

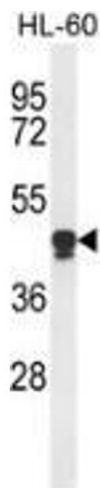
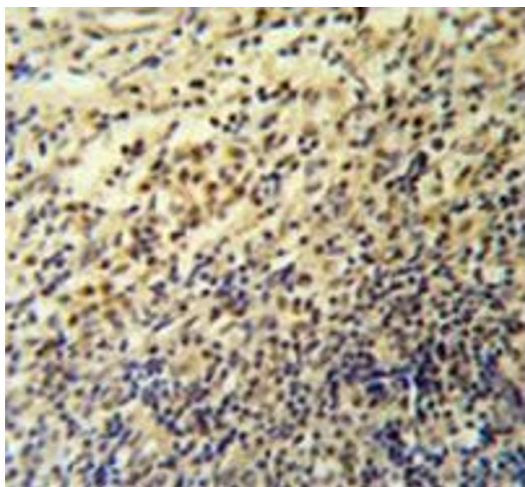
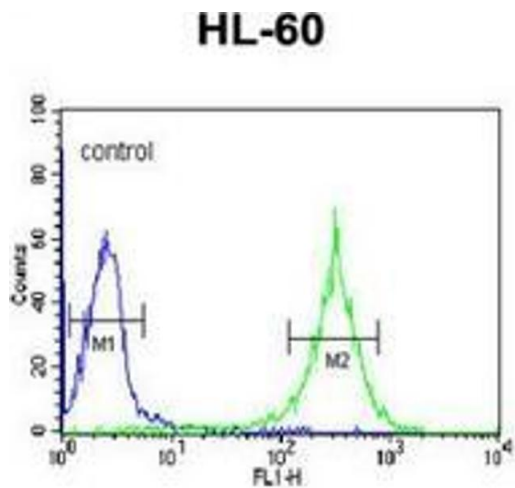
Alternative Name:	PLA2G7 ( <a href="#">Lp-PLA2 Products</a> )
Background:	The protein encoded by the PLA2G7 gene is a secreted enzyme that catalyzes the degradation of platelet-activating factor to biologically inactive products. Defects in this gene are a cause of platelet-activating factor acetylhydrolase deficiency. Synonyms: 1-alkyl-2-acetylglycerophosphocholine esterase, 2-acetyl-1-alkylglycerophosphocholine esterase, Group-VIIA phospholipase A2, LDL-PLA2, LDL-associated phospholipase A2, PAF 2-acylhydrolase, PAF acetylhydrolase, PAFAH, Platelet-activating factor acetylhydrolase, gVIIA-PLA2
Gene ID:	7941
NCBI Accession:	<a href="#">NP_001161829</a>
Pathways:	<a href="#">Peptide Hormone Metabolism</a>

## Application Details

Application Notes:	Optimal working dilution should be determined by the investigator.
Restrictions:	For Research Use only

## Handling

Format:	Liquid
Concentration:	0.25 mg/mL
Buffer:	PBS with 0.09 % (W/V) Sodium azide
Preservative:	Sodium azide
Precaution of Use:	This product contains sodium azide: a POISONOUS AND HAZARDOUS SUBSTANCE which should be handled by trained staff only.
Handling Advice:	Avoid repeated freezing and thawing.
Storage:	4 °C/-20 °C
Storage Comment:	Store undiluted at 2-8 °C for one month or (in aliquots) at -20 °C for longer.



### Flow Cytometry

**Image 1.** Flow cytometric analysis of HL-60 cells (right histogram) compared to a negative control cell (left histogram) using PLA2G7 Antibody , followed by FITC-conjugated goat-anti-rabbit secondary antibodies.

### Immunohistochemistry (Paraffin-embedded Sections)

**Image 2.** Immunohistochemistry analysis in tonsil (Formalin-fixed, Paraffin-embedded) using PLA2G7 Antibody , followed by peroxidase conjugated secondary antibody and DAB staining. This data demonstrates the use of the PLA2G7 antibody for IHC. Clinical relevance has not been evaluated.

### Western Blotting

**Image 3.** Western blot analysis of PLA2G7 (arrow) in HL-60 cell line lysates (35ug/lane) using PLA2G7