

Datasheet for ABIN954171

**anti-PLAG1 antibody (N-Term)**[Go to Product page](#)**1** Image

## Overview

Quantity:	0.4 mL
Target:	PLAG1
Binding Specificity:	AA 15-44, N-Term
Reactivity:	Human
Host:	Rabbit
Clonality:	Polyclonal
Conjugate:	This PLAG1 antibody is un-conjugated
Application:	Western Blotting (WB), Enzyme Immunoassay (EIA)

## Product Details

Immunogen:	Synthetic peptide - KLH conjugated - corresponding to the N-terminal region (between 15-44aa) of human PLAG1.
Isotype:	Ig Fraction
Specificity:	This antibody recognizes PLAG1 at N-term.
Cross-Reactivity (Details):	Species reactivity (tested):Human
Purification:	Purified through a Protein A column followed by peptide affinity purification

## Target Details

Target:	PLAG1
Alternative Name:	PLAG1 ( <a href="#">PLAG1 Products</a> )

## Target Details

Background: Pleomorphic adenoma gene 1 encodes a zinc finger protein with 2 putative nuclear localization signals. PLAG1, which is developmentally regulated, has been shown to be consistently rearranged in pleomorphic adenomas of the salivary glands. PLAG1 is activated by the reciprocal chromosomal translocations involving 8q12 in a subset of salivary gland pleomorphic adenomas. Three transcript variants encoding two different isoforms have been found for this gene. Synonyms: Pleiomorphic adenoma gene 1 protein, Zinc finger protein PLAG1

Gene ID: 5324

NCBI Accession: [NP\\_001108106](#)

## Application Details

Application Notes: Optimal working dilution should be determined by the investigator.

Restrictions: For Research Use only

## Handling

Format: Liquid

Concentration: 0.25 mg/mL

Buffer: PBS with 0.09 % (W/V) Sodium azide

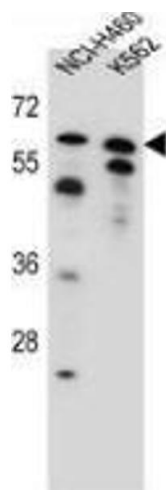
Preservative: Sodium azide

Precaution of Use: This product contains sodium azide: a POISONOUS AND HAZARDOUS SUBSTANCE which should be handled by trained staff only.

Handling Advice: Avoid repeated freezing and thawing.

Storage: 4 °C/-20 °C

Storage Comment: Store undiluted at 2-8 °C for one month or (in aliquots) at -20 °C for longer.



Western Blotting

**Image 1.** Western blot analysis in NCI-H460, K562 cell line lysates (35ug/lane) using PLAG1 Antibody (N-term). This demonstrates the PLAG1 antibody detected the PLAG1 protein (arrow).