

Datasheet for ABIN954186

anti-Phospholipase C delta 3 antibody (N-Term)[Go to Product page](#)**1** Image

Overview

Quantity:	0.4 mL
Target:	Phospholipase C delta 3 (PLCd3)
Binding Specificity:	AA 59-89, N-Term
Reactivity:	Mouse, Human
Host:	Rabbit
Clonality:	Polyclonal
Conjugate:	This Phospholipase C delta 3 antibody is un-conjugated
Application:	Western Blotting (WB), Enzyme Immunoassay (EIA)

Product Details

Immunogen:	KLH conjugated synthetic peptide between 59-89 amino acids from the N-terminal region of human PLCD3
Isotype:	Ig Fraction
Specificity:	This antibody recognizes Human and Mouse PLCD3 (N-term).
Purification:	Protein A column, followed by peptide affinity purification

Target Details

Target:	Phospholipase C delta 3 (PLCd3)
Alternative Name:	PLCD3 (PLCd3 Products)
Background:	This gene encodes a member of the phospholipase C family, which catalyze the hydrolysis of

Target Details

phosphatidylinositol 4,5-bisphosphate to generate the second messengers diacylglycerol and inositol 1,4,5-trisphosphate (IP3). Diacylglycerol and IP3 mediate a variety of cellular responses to extracellular stimuli by inducing protein kinase C and increasing cytosolic Ca(2+) concentrations. This enzyme localizes to the plasma membrane and requires calcium for activation. Its activity is inhibited by spermine, sphingosine, and several phospholipids. [provided by RefSeq].Synonyms: 1-phosphatidylinositol-4, 5-bisphosphate phosphodiesterase delta-3, PLC-delta-3, Phospholipase C delta 3, Phospholipase C-delta-3

Molecular Weight: 89258 Da

Gene ID: 113026

NCBI Accession: [NP_588614](#)

Pathways: [WNT Signaling](#)

Application Details

Application Notes: Optimal working dilution should be determined by the investigator.

Restrictions: For Research Use only

Handling

Format: Liquid

Concentration: 0.25 mg/mL

Buffer: PBS containing 0.09 % (W/V) Sodium Azide as preservative

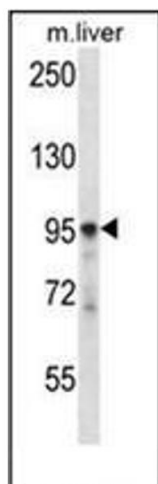
Preservative: Sodium azide

Precaution of Use: This product contains sodium azide: a POISONOUS AND HAZARDOUS SUBSTANCE which should be handled by trained staff only.

Handling Advice: Avoid repeated freezing and thawing.

Storage: 4 °C/-20 °C

Storage Comment: Store undiluted at 2-8 °C for one month or (in aliquots) at -20 °C for longer.



Western Blotting

Image 1. Western blot analysis of PLCD3 Antibody (N-term) in mouse liver tissue lysates (35ug/lane). This demonstrates the PLCD3 antibody detected the PLCD3 protein (arrow).