

Datasheet for ABIN954188
anti-PLCL2 antibody (C-Term)[Go to Product page](#)

4 Images

Overview

Quantity:	0.4 mL
Target:	PLCL2
Binding Specificity:	AA 1100-1127, C-Term
Reactivity:	Human
Host:	Rabbit
Clonality:	Polyclonal
Conjugate:	This PLCL2 antibody is un-conjugated
Application:	Western Blotting (WB), Immunofluorescence (IF), Flow Cytometry (FACS), Immunohistochemistry (Paraffin-embedded Sections) (IHC (p)), Enzyme Immunoassay (EIA)

Product Details

Immunogen:	KLH conjugated synthetic peptide between 1100-1127 amino acids from the C-terminal region of human PLCL2
Isotype:	Ig Fraction
Specificity:	This antibody recognizes Human PLCL2 (C-term).
Purification:	Protein A column, followed by peptide affinity purification

Target Details

Target:	PLCL2
Alternative Name:	PLCL2 (PLCL2 Products)

Target Details

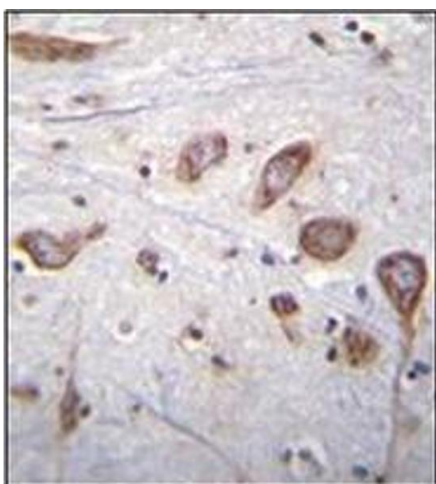
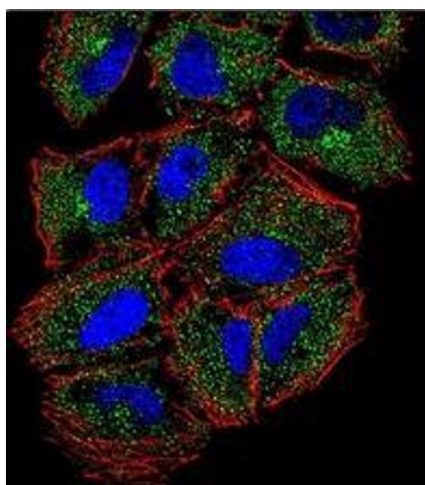
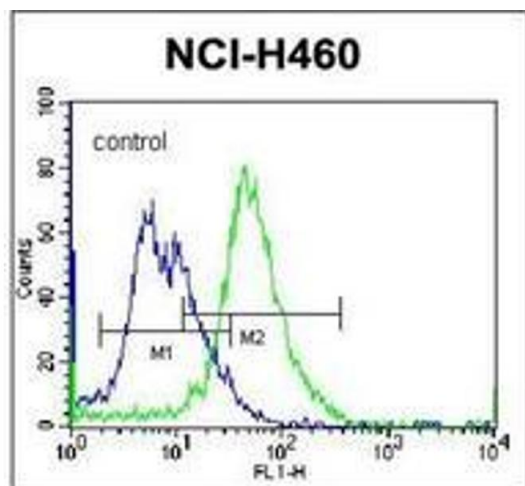
Background:	PLCL2 may play an role in the regulation of Ins(1,4,5)P3 around the endoplasmic reticulum (By similarity).Synonyms: Inactive phospholipase C-like protein 2, KIAA1092, PLC-L2, PLC-epsilon-2, PLCE2, Phospholipase C epsilon 2, Phospholipase C-L2, Phospholipase C-epsilon-2
Molecular Weight:	125866 Da
Gene ID:	23228
NCBI Accession:	NP_001137854

Application Details

Application Notes:	Optimal working dilution should be determined by the investigator.
Restrictions:	For Research Use only

Handling

Format:	Liquid
Concentration:	0.25 mg/mL
Buffer:	PBS containing 0.09 % (W/V) Sodium Azide as preservative
Preservative:	Sodium azide
Precaution of Use:	This product contains sodium azide: a POISONOUS AND HAZARDOUS SUBSTANCE which should be handled by trained staff only.
Handling Advice:	Avoid repeated freezing and thawing.
Storage:	4 °C/-20 °C
Storage Comment:	Store undiluted at 2-8 °C for one month or (in aliquots) at -20 °C for longer.



Flow Cytometry

Image 1. Flow cytometric analysis of NCI-H460 cells using PLCL2 Antibody (C-term) Cat.-No AP53339PU-N (right histogram) compared to a negative control cell (left histogram). FITC-conjugated donkey-anti-rabbit secondary antibodies were used for the analysis.

Immunofluorescence

Image 2. Confocal immunofluorescent analysis of PLCL2 Antibody (C-term) Cat.-No AP53339PU-N with NCI-H460 cell followed by Alexa Fluor 488-conjugated Goat anti-Rabbit IgG (green). Actin filaments have been labeled with Alexa Fluor 555 phalloidin (red). DAPI was used to stain the cell nuclear (blue).

Immunohistochemistry (Paraffin-embedded Sections)

Image 3. Immunohistochemistry analysis in formalin fixed and paraffin embedded human brain tissue reacted with PLCL2 Antibody (C-term) followed which was peroxidase conjugated to the secondary antibody and followed by DAB staining. This data demonstrates the use of PLCL2 Antibody (C-term) for immunohistochemistry. Clinical relevance has not been evaluated.

Please check the [product details page](#) for more images. Overall 4 images are available for ABIN954188.