

Datasheet for ABIN954194
anti-PLD5 antibody (C-Term)

3 Images

[Go to Product page](#)

Overview

Quantity:	0.4 mL
Target:	PLD5
Binding Specificity:	AA 515-544, C-Term
Reactivity:	Human
Host:	Rabbit
Clonality:	Polyclonal
Conjugate:	This PLD5 antibody is un-conjugated
Application:	Western Blotting (WB), Immunofluorescence (IF), Immunohistochemistry (Paraffin-embedded Sections) (IHC (p)), Enzyme Immunoassay (EIA)

Product Details

Immunogen:	KLH conjugated synthetic peptide between 515-544 amino acids from the C-terminal region of human PLD5
Isotype:	Ig Fraction
Specificity:	This antibody recognizes Human PLD5 (C-term).
Purification:	Protein A column, followed by peptide affinity purification

Target Details

Target:	PLD5
Alternative Name:	PLD5 (PLD5 Products)

Target Details

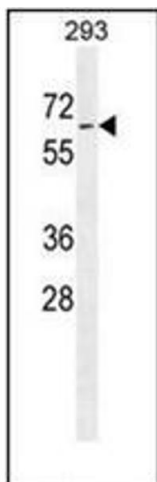
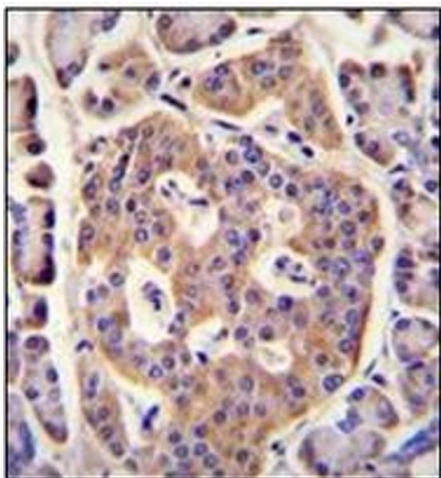
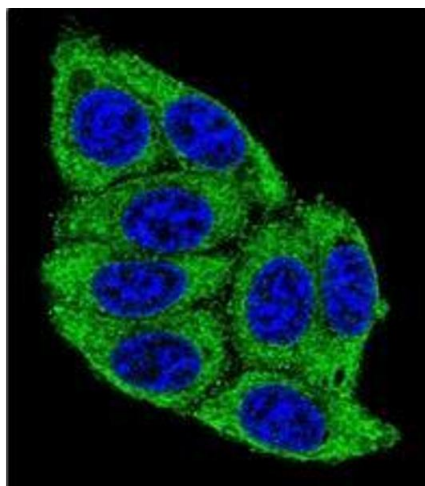
Background:	Synonyms: Inactive PLD 5, Inactive choline phosphatase 5, Inactive phosphatidylcholine-hydrolyzing phospholipase D5, Inactive phospholipase D5, PLDc
Molecular Weight:	61312 Da
Gene ID:	200150
NCBI Accession:	NP_001182740

Application Details

Application Notes:	Optimal working dilution should be determined by the investigator.
Restrictions:	For Research Use only

Handling

Format:	Liquid
Concentration:	0.25 mg/mL
Buffer:	PBS containing 0.09 % (W/V) Sodium Azide as preservative
Preservative:	Sodium azide
Precaution of Use:	This product contains sodium azide: a POISONOUS AND HAZARDOUS SUBSTANCE which should be handled by trained staff only.
Handling Advice:	Avoid repeated freezing and thawing.
Storage:	4 °C/-20 °C
Storage Comment:	Store undiluted at 2-8 °C for one month or (in aliquots) at -20 °C for longer.



Immunofluorescence

Image 1. Confocal immunofluorescent analysis of PLD5 Antibody (C-term) Cat.-No AP53345PU-N with 293 cell followed by Alexa Fluor®488-conjugated Goat anti-Rabbit IgG (green). DAPI was used to stain the cell nuclear (blue).

Immunohistochemistry (Paraffin-embedded Sections)

Image 2. Immunohistochemistry analysis in formalin fixed and paraffin embedded human pancreas tissue reacted with PLD5 Antibody (C-term) followed which was peroxidase conjugated to the secondary antibody and followed by DAB staining. This data demonstrates the use of PLD5 Antibody (C-term) for immunohistochemistry. Clinical relevance has not been evaluated.

Western Blotting

Image 3. Western blot analysis of PLD5 Antibody (C-term) in 293 cell line lysates (35ug/lane). This demonstrates the PLD5 antibody detected the PLD5 protein (arrow).