

Datasheet for ABIN954197
anti-PLEKHA4 antibody (N-Term)

3 Images

[Go to Product page](#)

Overview

Quantity:	0.4 mL
Target:	PLEKHA4
Binding Specificity:	AA 28-58, N-Term
Reactivity:	Human
Host:	Rabbit
Clonality:	Polyclonal
Conjugate:	This PLEKHA4 antibody is un-conjugated
Application:	Western Blotting (WB), Flow Cytometry (FACS), Immunohistochemistry (Paraffin-embedded Sections) (IHC (p)), Enzyme Immunoassay (EIA)

Product Details

Immunogen:	KLH conjugated synthetic peptide between 28-58 amino acids from the N-terminal region of human PLEKHA4
Isotype:	Ig Fraction
Specificity:	This antibody recognizes Human PLEKHA4 (N-term).
Purification:	Protein A column, followed by peptide affinity purification

Target Details

Target:	PLEKHA4
Alternative Name:	PLEKHA4 (PLEKHA4 Products)

Target Details

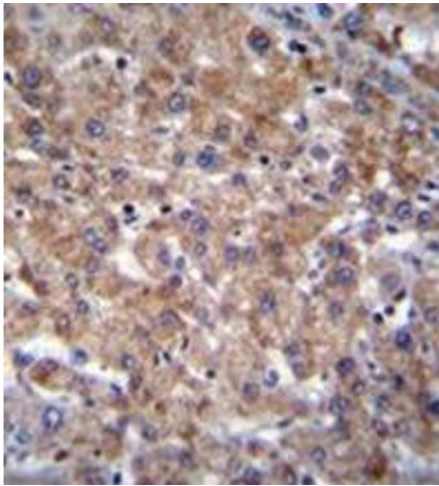
Background:	PLEKHA4 binds specifically to phosphatidylinositol-3-phosphate (PtdIns3P), but not to other phosphoinositides.Synonyms: PEPP-1, PEPP1, PH domain-containing family A member 4, Phosphoinositol 3-phosphate-binding protein 1, Pleckstrin homology domain-containing family A member 4
Molecular Weight:	85401 Da
Gene ID:	57664
NCBI Accession:	NP_001154826

Application Details

Application Notes:	Optimal working dilution should be determined by the investigator.
Restrictions:	For Research Use only

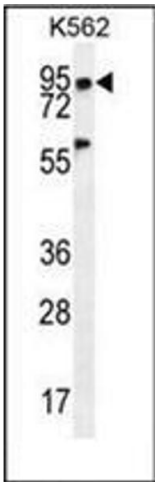
Handling

Format:	Liquid
Concentration:	0.25 mg/mL
Buffer:	PBS containing 0.09 % (W/V) Sodium Azide as preservative
Preservative:	Sodium azide
Precaution of Use:	This product contains sodium azide: a POISONOUS AND HAZARDOUS SUBSTANCE which should be handled by trained staff only.
Handling Advice:	Avoid repeated freezing and thawing.
Storage:	4 °C/-20 °C
Storage Comment:	Store undiluted at 2-8 °C for one month or (in aliquots) at -20 °C for longer.



Immunohistochemistry (Paraffin-embedded Sections)

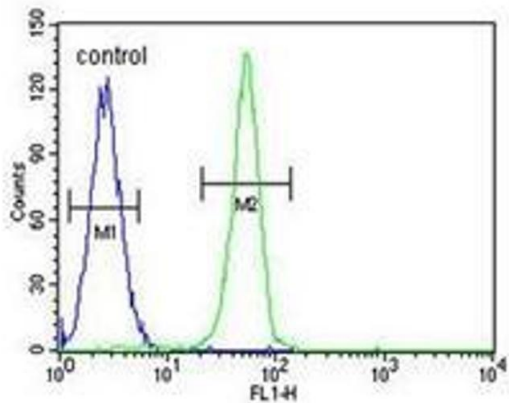
Image 1. Immunohistochemistry analysis in formalin fixed and paraffin embedded human liver tissue reacted with PLEKHA4 Antibody (N-term) followed which was peroxidase conjugated to the secondary antibody and followed by DAB staining. This data demonstrates the use of PLEKHA4 Antibody (N-term) for immunohistochemistry. Clinical relevance has not been evaluated.



Western Blotting

Image 2. Western blot analysis of PLEKHA4 Antibody (N-term) in K562 cell line lysates (35ug/lane). This demonstrates the PLEKHA4 antibody detected the PLEKHA4 protein (arrow).

K562



Flow Cytometry

Image 3. Flow cytometric analysis of K562 cells using PLEKHA4 Antibody (N-term) Cat.No AP53347PU-N (right histogram) compared to a negative control cell (left histogram).FITC-conjugated goat-anti-rabbit secondary antibodies were used for the analysis.