



[Go to Product page](#)

Datasheet for ABIN954198

## anti-**PLEKHF1** antibody (N-Term)

### 1 Image

#### Overview

Quantity:	0.4 mL
Target:	PLEKHF1
Binding Specificity:	AA 50-79, N-Term
Reactivity:	Human
Host:	Rabbit
Clonality:	Polyclonal
Conjugate:	This PLEKHF1 antibody is un-conjugated
Application:	Western Blotting (WB), Enzyme Immunoassay (EIA)

#### Product Details

Immunogen:	KLH conjugated synthetic peptide between 50-79 amino acids from the N-terminal region of human PLEKHF1
Isotype:	Ig Fraction
Specificity:	This antibody recognizes Human PLEKHF1 (N-term).
Purification:	Protein A column, followed by peptide affinity purification

#### Target Details

Target:	PLEKHF1
Alternative Name:	PLEKHF1 ( <a href="#">PLEKHF1 Products</a> )
Background:	PLEKHF1 may induce apoptosis through the lysosomal-mitochondrial pathway. Translocates

## Target Details

---

to the lysosome initiating the permeabilization of lysosomal membrane (LMP) and resulting in the release of CTSD and CTSL to the cytoplasm. Triggers the caspase-independent apoptosis by altering mitochondrial membrane permeabilization (MMP) resulting in the release of PDCD8. Synonyms: APPD, Apoptosis-inducing protein, LAPF, Lysosome-associated apoptosis-inducing protein containing PH and FYVE domains, PH domain-containing family F member 1, Phafin 1, Phafin-1, Pleckstrin homology domain-containing family F member 1, ZFYVE15, Zinc finger FYVE domain-containing protein 15

---

Molecular Weight: 31195 Da

---

Gene ID: 79156

---

NCBI Accession: [NP\\_077286](#)

## Application Details

---

---

Application Notes: Optimal working dilution should be determined by the investigator.

---

Restrictions: For Research Use only

## Handling

---

---

Format: Liquid

---

Concentration: 0.25 mg/mL

---

Buffer: PBS containing 0.09 % (W/V) Sodium Azide as preservative

---

Preservative: Sodium azide

---

Precaution of Use: This product contains sodium azide: a POISONOUS AND HAZARDOUS SUBSTANCE which should be handled by trained staff only.

---

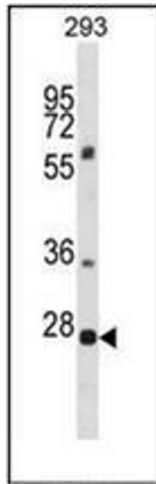
Handling Advice: Avoid repeated freezing and thawing.

---

Storage: 4 °C/-20 °C

---

Storage Comment: Store undiluted at 2-8 °C for one month or (in aliquots) at -20 °C for longer.



### Western Blotting

**Image 1.** Western blot analysis of PLEKHF1 Antibody (N-term) in 293 cell line lysates (35ug/lane). This demonstrates the PLEKHF1 antibody detected the PLEKHF1 protein (arrow).