

Datasheet for ABIN954199

anti-PLEKHF2 antibody (Middle Region)[Go to Product page](#)**1** Image

Overview

| | |
|----------------------|---|
| Quantity: | 0.4 mL |
| Target: | PLEKHF2 |
| Binding Specificity: | AA 70-98, Middle Region |
| Reactivity: | Human |
| Host: | Rabbit |
| Clonality: | Polyclonal |
| Conjugate: | This PLEKHF2 antibody is un-conjugated |
| Application: | Western Blotting (WB), Enzyme Immunoassay (EIA) |

Product Details

| | |
|---------------|---|
| Immunogen: | KLH conjugated synthetic peptide between 70-98 amino acids from the Central region of human PLEKHF2 |
| Isotype: | Ig Fraction |
| Specificity: | This antibody recognizes Human PLEKHF2 (Center). |
| Purification: | Protein A column, followed by peptide affinity purification |

Target Details

| | |
|-------------------|---|
| Target: | PLEKHF2 |
| Alternative Name: | PLEKHF2 (PLEKHF2 Products) |
| Background: | PLEKHF2 (Phafin 2) is a PH and FYVE domain containing protein 2. The FYVE domain and Zinc |

Target Details

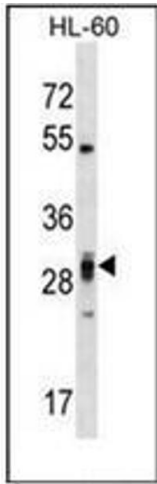
| | |
|-------------------|---|
| | binding domain targets proteins to membrane lipids via interaction with phosphatidylinositol 3 phosphate, PI3P. The FYVE domain and Zinc binding domain present in Fab1, YOTB, Vac1, and EEA1.Synonyms: PH domain-containing family F member 2, Phafin 2, Phafin-2, Pleckstrin homology domain-containing family F member 2, ZFYVE18, Zinc finger FYVE domain-containing protein 18 |
| Molecular Weight: | 27798 Da |
| Gene ID: | 79666 |
| NCBI Accession: | NP_078889 |
| Pathways: | SARS-CoV-2 Protein Interactome |

Application Details

| | |
|--------------------|--|
| Application Notes: | Optimal working dilution should be determined by the investigator. |
| Restrictions: | For Research Use only |

Handling

| | |
|--------------------|--|
| Format: | Liquid |
| Concentration: | 0.25 mg/mL |
| Buffer: | PBS containing 0.09 % (W/V) Sodium Azide as preservative |
| Preservative: | Sodium azide |
| Precaution of Use: | This product contains sodium azide: a POISONOUS AND HAZARDOUS SUBSTANCE which should be handled by trained staff only. |
| Handling Advice: | Avoid repeated freezing and thawing. |
| Storage: | 4 °C/-20 °C |
| Storage Comment: | Store undiluted at 2-8 °C for one month or (in aliquots) at -20 °C for longer. |



Western Blotting

Image 1. Western blot analysis of PLEKHF2 Antibody (Center) in HL-60 cell line lysates (35ug/lane). This demonstrates the PLEKHF2 antibody detected the PLEKHF2 protein (arrow).