



[Go to Product page](#)

Datasheet for ABIN954200

anti-**PLEKHG3** antibody (C-Term)

2 Images

Overview

Quantity:	0.4 mL
Target:	PLEKHG3
Binding Specificity:	AA 1185-1214, C-Term
Reactivity:	Human
Host:	Rabbit
Clonality:	Polyclonal
Conjugate:	This PLEKHG3 antibody is un-conjugated
Application:	Western Blotting (WB), Immunohistochemistry (Paraffin-embedded Sections) (IHC (p)), Enzyme Immunoassay (EIA)

Product Details

Immunogen:	KLH conjugated synthetic peptide between 1185-1214 amino acids from the C-terminal region of human PLEKHG3
Isotype:	Ig Fraction
Specificity:	This antibody recognizes Human PLEKHG3 (C-term).
Purification:	Protein A column, followed by peptide affinity purification

Target Details

Target:	PLEKHG3
Alternative Name:	PLEKHG3 (PLEKHG3 Products)

Target Details

Background:	Synonyms: KIAA0599, Pleckstrin homology domain-containing family G member 3
Molecular Weight:	134412 Da
Gene ID:	26030
NCBI Accession:	NP_056364

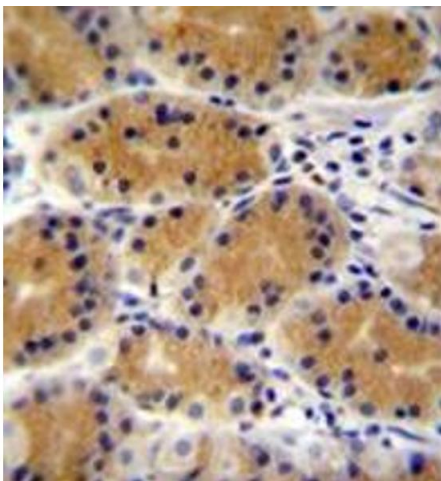
Application Details

Application Notes:	Optimal working dilution should be determined by the investigator.
Restrictions:	For Research Use only

Handling

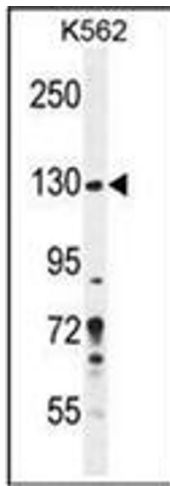
Format:	Liquid
Concentration:	0.25 mg/mL
Buffer:	PBS containing 0.09 % (W/V) Sodium Azide as preservative
Preservative:	Sodium azide
Precaution of Use:	This product contains sodium azide: a POISONOUS AND HAZARDOUS SUBSTANCE which should be handled by trained staff only.
Handling Advice:	Avoid repeated freezing and thawing.
Storage:	4 °C/-20 °C
Storage Comment:	Store undiluted at 2-8 °C for one month or (in aliquots) at -20 °C for longer.

Images



Immunohistochemistry (Paraffin-embedded Sections)

Image 1. Immunohistochemistry analysis in formalin fixed and paraffin embedded human stomach tissue reacted with PLEKHG3 Antibody (C-term) followed which was peroxidase conjugated to the secondary antibody and followed by DAB staining. This data demonstrates the use of PLEKHG3 Antibody (C-term) for immunohistochemistry. Clinical relevance has not been evaluated.



Western Blotting

Image 2. Western blot analysis of PLEKHG3 Antibody (C-term) in K562 cell line lysates (35ug/lane). This demonstrates the PLEKHG3 antibody detected the PLEKHG3 protein (arrow).