



[Go to Product page](#)

Datasheet for ABIN954201
anti-PLEKHH1 antibody (C-Term)

3 Images

Overview

Quantity:	0.4 mL
Target:	PLEKHH1
Binding Specificity:	AA 1089-1118, C-Term
Reactivity:	Human
Host:	Rabbit
Clonality:	Polyclonal
Conjugate:	This PLEKHH1 antibody is un-conjugated
Application:	Western Blotting (WB), Flow Cytometry (FACS), Immunohistochemistry (Paraffin-embedded Sections) (IHC (p)), Enzyme Immunoassay (EIA)

Product Details

Immunogen:	KLH conjugated synthetic peptide between 1089-1118 amino acids from the C-terminal region of human PLEKHH1
Isotype:	Ig Fraction
Specificity:	This antibody recognizes Human PLEKHH1 (C-term).
Purification:	Protein A column, followed by peptide affinity purification

Target Details

Target:	PLEKHH1
Alternative Name:	PLEKHH1 (PLEKHH1 Products)

Target Details

Background:	Synonyms: KIAA1200, Pleckstrin homology domain-containing family H member 1
Molecular Weight:	151232 Da
Gene ID:	57475
NCBI Accession:	NP_065766

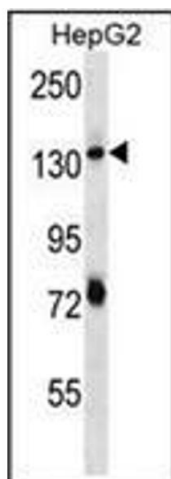
Application Details

Application Notes:	Optimal working dilution should be determined by the investigator.
Restrictions:	For Research Use only

Handling

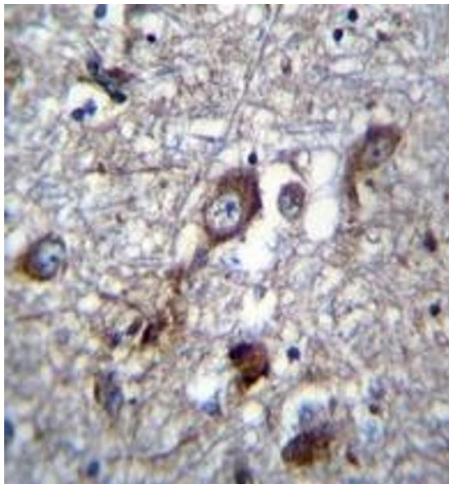
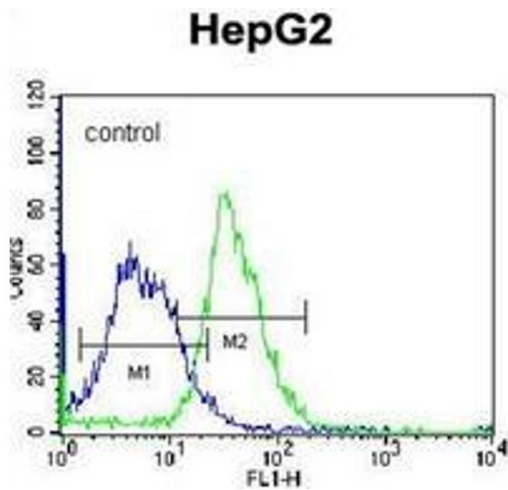
Format:	Liquid
Concentration:	0.25 mg/mL
Buffer:	PBS containing 0.09 % (W/V) Sodium Azide as preservative
Preservative:	Sodium azide
Precaution of Use:	This product contains sodium azide: a POISONOUS AND HAZARDOUS SUBSTANCE which should be handled by trained staff only.
Handling Advice:	Avoid repeated freezing and thawing.
Storage:	4 °C/-20 °C
Storage Comment:	Store undiluted at 2-8 °C for one month or (in aliquots) at -20 °C for longer.

Images



Western Blotting

Image 1. Western blot analysis of PLEKHH1 Antibody (C-term) in HepG2 cell line lysates (35ug/lane). This demonstrates the PLEKHH1 antibody detected the PLEKHH1 protein (arrow).



Flow Cytometry

Image 2. Flow cytometric analysis of K562 cells using PLEKHH1 Antibody (C-term) Cat.-No AP53351PU-N (right histogram) compared to a negative control cell (left histogram). FITC-conjugated donkey-anti-rabbit secondary antibodies were used for the analysis.

Immunohistochemistry (Paraffin-embedded Sections)

Image 3. Immunohistochemistry analysis in formalin fixed and paraffin embedded human brain tissue reacted with PLEKHH1 Antibody (C-term) followed which was peroxidase conjugated to the secondary antibody and followed by DAB staining. This data demonstrates the use of PLEKHH1 Antibody (C-term) for immunohistochemistry. Clinical relevance has not been evaluated.