



Datasheet for ABIN954211  
**anti-PM20D2 antibody (C-Term)**



[Go to Product page](#)

3 Images

Overview

Quantity:	0.4 mL
Target:	PM20D2
Binding Specificity:	AA 403-433, C-Term
Reactivity:	Human
Host:	Rabbit
Clonality:	Polyclonal
Conjugate:	This PM20D2 antibody is un-conjugated
Application:	Western Blotting (WB), Immunofluorescence (IF), Immunohistochemistry (Paraffin-embedded Sections) (IHC (p)), Enzyme Immunoassay (EIA)

Product Details

Immunogen:	KLH conjugated synthetic peptide between 403-433 amino acids from the C-terminal region of human PM20D2
Isotype:	Ig Fraction
Specificity:	This antibody recognizes Human PM20D2 (C-term).
Purification:	Protein A column, followed by peptide affinity purification

Target Details

Target:	PM20D2
Alternative Name:	PM20D2 ( <a href="#">PM20D2 Products</a> )

## Target Details

---

Background:	PM20D2 belongs to the peptidase M20A family. The function of PM20D2 remains unknown.Synonyms: Aminoacylase-1-like protein 2, Peptidase M20 domain-containing protein 2
Molecular Weight:	47776 Da
Gene ID:	135293
NCBI Accession:	<a href="#">NP_001010853</a>

## Application Details

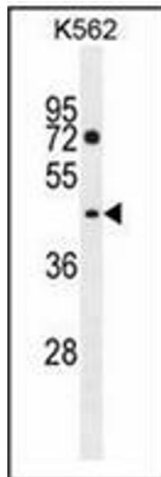
---

Application Notes:	Optimal working dilution should be determined by the investigator.
Restrictions:	For Research Use only

## Handling

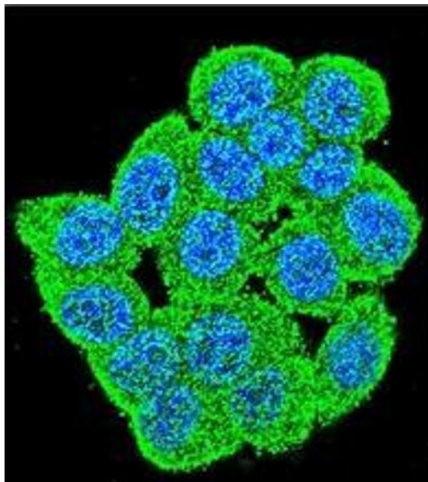
---

Format:	Liquid
Concentration:	0.25 mg/mL
Buffer:	PBS containing 0.09 % (W/V) Sodium Azide as preservative
Preservative:	Sodium azide
Precaution of Use:	This product contains sodium azide: a POISONOUS AND HAZARDOUS SUBSTANCE which should be handled by trained staff only.
Handling Advice:	Avoid repeated freezing and thawing.
Storage:	4 °C/-20 °C
Storage Comment:	Store undiluted at 2-8 °C for one month or (in aliquots) at -20 °C for longer.



### Western Blotting

**Image 1.** Western blot analysis of PM20D2 Antibody (C-term) in K562 cell line lysates (35ug/lane). This demonstrates the PM20D2 antibody detected the PM20D2 protein (arrow).



### Immunofluorescence

**Image 2.** Confocal immunofluorescent analysis of PM20D2 Antibody (C-term) Cat.-No AP53359PU-N with HeLa cell followed by Alexa Fluor®488-conjugated Goat anti-Rabbit IgG (green). DAPI was used to stain the cell nuclear (blue).



### Immunohistochemistry (Paraffin-embedded Sections)

**Image 3.** Immunohistochemistry analysis in formalin fixed and paraffin embedded human placenta tissue reacted with PM20D2 Antibody (C-term) followed which was peroxidase conjugated to the secondary antibody and followed by DAB staining. This data demonstrates the use of PM20D2 Antibody (C-term) for immunohistochemistry. Clinical relevance has not been evaluated.