

Datasheet for ABIN954221

anti-PMS1 antibody (C-Term)[Go to Product page](#)**1** Image

Overview

| | |
|----------------------|---|
| Quantity: | 0.4 mL |
| Target: | PMS1 |
| Binding Specificity: | AA 693-722, C-Term |
| Reactivity: | Human |
| Host: | Rabbit |
| Clonality: | Polyclonal |
| Conjugate: | This PMS1 antibody is un-conjugated |
| Application: | Western Blotting (WB), Enzyme Immunoassay (EIA) |

Product Details

| | |
|---------------|---|
| Immunogen: | KLH conjugated synthetic peptide between 693-722 amino acids from the C-terminal region of human PMS1 |
| Isotype: | Ig Fraction |
| Specificity: | This antibody recognizes Human PMS1 (C-term). |
| Purification: | Protein A column, followed by peptide affinity purification |

Target Details

| | |
|-------------------|---|
| Target: | PMS1 |
| Alternative Name: | PMS1 (PMS1 Products) |
| Background: | This gene encodes a protein belonging to the DNA mismatch repair mutL/hexB family. This |

Target Details

protein is thought to be involved in the repair of DNA mismatches, and it can form heterodimers with MLH1, a known DNA mismatch repair protein. Mutations in this gene cause hereditary nonpolyposis colorectal cancer type 3 (HNPCC3) either alone or in combination with mutations in other genes involved in the HNPCC phenotype, which is also known as Lynch syndrome. Synonyms: DNA mismatch repair protein PMS1, PMS1 protein homolog 1, PMSL1

Molecular Weight: 105830 Da

Gene ID: 5378

NCBI Accession: [NP_000525](#)

Application Details

Application Notes: Optimal working dilution should be determined by the investigator.

Restrictions: For Research Use only

Handling

Format: Liquid

Concentration: 0.25 mg/mL

Buffer: PBS containing 0.09 % (W/V) Sodium Azide as preservative

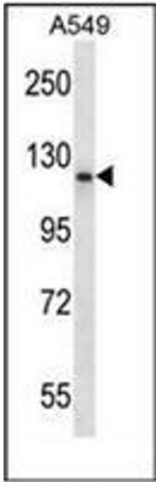
Preservative: Sodium azide

Precaution of Use: This product contains sodium azide: a POISONOUS AND HAZARDOUS SUBSTANCE which should be handled by trained staff only.

Handling Advice: Avoid repeated freezing and thawing.

Storage: 4 °C/-20 °C

Storage Comment: Store undiluted at 2-8 °C for one month or (in aliquots) at -20 °C for longer.



Western Blotting

Image 1. Western blot analysis of PMS1 Antibody (C-term) in A549 cell line lysates (35ug/lane). This demonstrates the PMS1 antibody detected the PMS1 protein (arrow).