



[Go to Product page](#)

Datasheet for ABIN954224
anti-PNLDC1 antibody (C-Term)

3 Images

Overview

Quantity:	0.4 mL
Target:	PNLDC1
Binding Specificity:	AA 456-486, C-Term
Reactivity:	Human
Host:	Rabbit
Clonality:	Polyclonal
Conjugate:	This PNLDC1 antibody is un-conjugated
Application:	Western Blotting (WB), Flow Cytometry (FACS), Immunohistochemistry (Paraffin-embedded Sections) (IHC (p)), Enzyme Immunoassay (EIA)

Product Details

Immunogen:	KLH conjugated synthetic peptide between 456-486 amino acids from the C-terminal region of Human PNLDC1 Genename: PNLDC1
Isotype:	Ig Fraction
Specificity:	This antibody recognizes Human PNLDC1 (C-term).
Purification:	Affinity Chromatography on Protein A

Target Details

Target:	PNLDC1
Alternative Name:	PNLDC1 (PNLDC1 Products)

Target Details

Background:	Synonyms: Poly(A)-specific ribonuclease PARN-like domain-containing protein 1
Molecular Weight:	60124 Da
Gene ID:	154197
NCBI Accession:	NP_775787

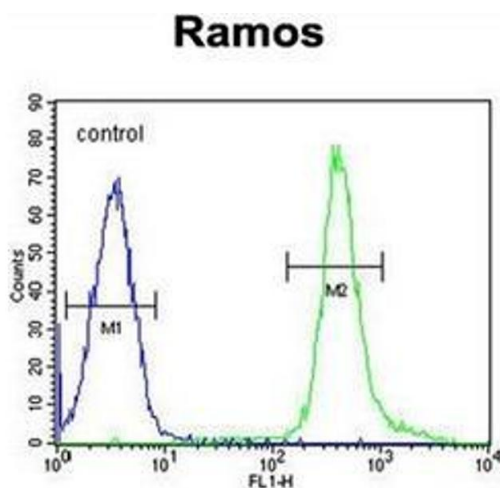
Application Details

Application Notes:	Optimal working dilution should be determined by the investigator.
Restrictions:	For Research Use only

Handling

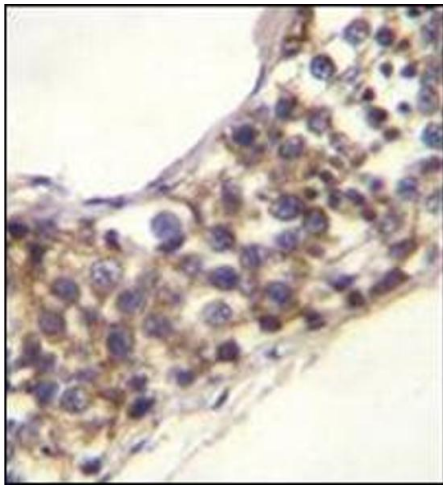
Format:	Liquid
Concentration:	0.25 mg/mL
Buffer:	PBS, 0.09 % Sodium Azide
Preservative:	Sodium azide
Precaution of Use:	This product contains sodium azide: a POISONOUS AND HAZARDOUS SUBSTANCE which should be handled by trained staff only.
Handling Advice:	Avoid repeated freezing and thawing.
Storage:	4 °C/-20 °C
Storage Comment:	Store undiluted at 2-8 °C for one month or (in aliquots) at -20 °C for longer.

Images



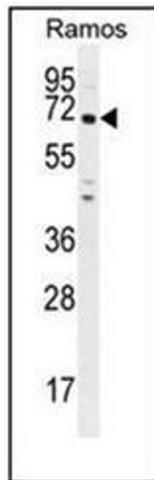
Flow Cytometry

Image 1. Flow cytometric analysis of Ramos cells using PNLDC1 Antibody (C-term) Cat.-No AP53365PU-N (right histogram) compared to a Negative Control cell (left histogram). FITC-conjugated Goat-anti-Rabbit secondary antibodies were used for the analysis.



Immunohistochemistry (Paraffin-embedded Sections)

Image 2. Formalin fixed, paraffin embedded human testis tissue stained with PNLDC1 Antibody (C-term) followed by peroxidase conjugation of the secondary antibody and DAB staining. This data demonstrates the use of PNLDC1 Antibody (C-term) for Immunohistochemistry. Clinical relevance has not been evaluated.



Western Blotting

Image 3. Western blot analysis of PNLDC1 Antibody (C-term) in Ramos cell line lysates (35ug/lane). This demonstrates the PNLDC1 antibody detected the PNLDC1 protein (arrow).