

Datasheet for ABIN954233

anti-POFUT2 antibody (Middle Region)[Go to Product page](#)**2** Images

Overview

Quantity:	0.4 mL
Target:	POFUT2
Binding Specificity:	AA 235-265, Middle Region
Reactivity:	Human
Host:	Rabbit
Clonality:	Polyclonal
Conjugate:	This POFUT2 antibody is un-conjugated
Application:	Western Blotting (WB), Immunohistochemistry (Paraffin-embedded Sections) (IHC (p)), Enzyme Immunoassay (EIA)

Product Details

Immunogen:	KLH conjugated synthetic peptide between 235-265 amino acids from the Central region of human POFUT2
Isotype:	Ig Fraction
Specificity:	This antibody recognizes Human POFUT2 (Center).
Purification:	Protein A column, followed by peptide affinity purification

Target Details

Target:	POFUT2
Alternative Name:	POFUT2 (POFUT2 Products)

Target Details

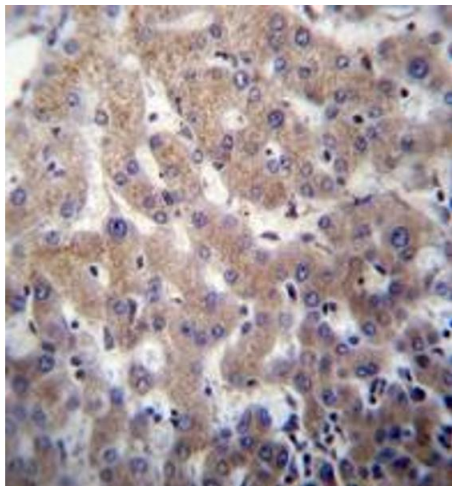
Background:	Fucose is typically found as a terminal modification of branched chain glycoconjugates, but it also exists in direct O-linkage to serine or threonine residues within cystine knot motifs in epidermal growth factor (EGF, MIM 131530)-like repeats or thrombospondin (THBS, see MIM 188060) type-1 repeats. POFUT2 is an O-fucosyltransferase that use THBS type-1 repeats as substrates (Luo et al., 2006 [PubMed 16464857]).Synonyms: C21orf80, FUT13, GDP-fucose protein O-fucosyltransferase 2, KIAA0958, O-FucT-2, Peptide-O-fucosyltransferase 2
Molecular Weight:	49976 Da
Gene ID:	23275
NCBI Accession:	NP_056042

Application Details

Application Notes:	Optimal working dilution should be determined by the investigator.
Restrictions:	For Research Use only

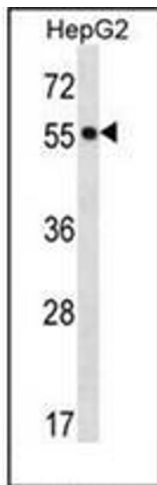
Handling

Format:	Liquid
Concentration:	0.25 mg/mL
Buffer:	PBS containing 0.09 % (W/V) Sodium Azide as preservative
Preservative:	Sodium azide
Precaution of Use:	This product contains sodium azide: a POISONOUS AND HAZARDOUS SUBSTANCE which should be handled by trained staff only.
Handling Advice:	Avoid repeated freezing and thawing.
Storage:	4 °C/-20 °C
Storage Comment:	Store undiluted at 2-8 °C for one month or (in aliquots) at -20 °C for longer.



Immunohistochemistry (Paraffin-embedded Sections)

Image 1. Immunohistochemistry analysis in formalin fixed and paraffin embedded human liver tissue reacted with POFUT2 Antibody (Center) followed which was peroxidase conjugated to the secondary antibody and followed by DAB staining. This data demonstrates the use of POFUT2 Antibody (Center) for immunohistochemistry. Clinical relevance has not been evaluated.



Western Blotting

Image 2. Western blot analysis of POFUT2 Antibody (Center) in HepG2 cell line lysates (35ug/lane). This demonstrates the POFUT2 antibody detected the POFUT2 protein (arrow).