

Datasheet for ABIN954237
anti-POLR1B antibody (N-Term)

3 Images

[Go to Product page](#)

Overview

Quantity:	0.4 mL
Target:	POLR1B
Binding Specificity:	AA 88-117, N-Term
Reactivity:	Human
Host:	Rabbit
Clonality:	Polyclonal
Conjugate:	This POLR1B antibody is un-conjugated
Application:	Western Blotting (WB), Flow Cytometry (FACS), Immunohistochemistry (Paraffin-embedded Sections) (IHC (p)), Enzyme Immunoassay (EIA)

Product Details

Immunogen:	conjugated synthetic peptide between 88-117 amino acids from the N-terminal region of human POLR1B
Isotype:	Ig Fraction
Specificity:	This antibody recognizes Human POLR1B (N-term).
Purification:	Affinity Chromatography on Protein A

Target Details

Target:	POLR1B
Alternative Name:	POLR1B (POLR1B Products)

Target Details

Background: Eukaryotic RNA polymerase I (pol I) is responsible for the transcription of ribosomal RNA (rRNA) genes and production of rRNA, the primary component of ribosomes. Pol I is a multisubunit enzyme composed of 6 to 14 polypeptides, depending on the species. Most of the mass of the pol I complex derives from the 2 largest subunits, Rpa1 and Rpa2 in yeast. POLR1B is homologous to Rpa2 (Seither and Grummt, 1996 [PubMed 8921381]). Synonyms: DNA-directed RNA polymerase I 135 kDa polypeptide, DNA-directed RNA polymerase I subunit RPA2, RNA polymerase I subunit 2, RPA135

Molecular Weight: 128229 Da

Gene ID: 84172

NCBI Accession: [NP_001131076](#)

Application Details

Application Notes: Optimal working dilution should be determined by the investigator.

Restrictions: For Research Use only

Handling

Format: Liquid

Concentration: 0.25 mg/mL

Buffer: PBS containing 0.09 % (W/V) Sodium Azide as preservative

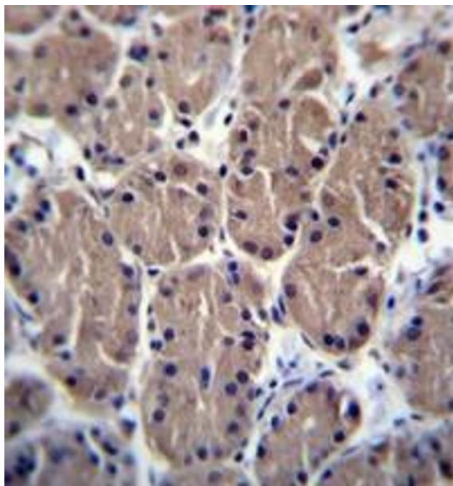
Preservative: Sodium azide

Precaution of Use: This product contains sodium azide: a POISONOUS AND HAZARDOUS SUBSTANCE which should be handled by trained staff only.

Handling Advice: Avoid repeated freezing and thawing.

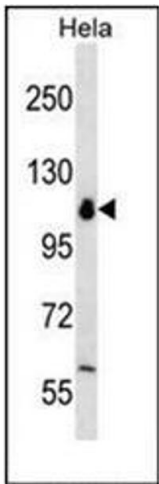
Storage: 4 °C/-20 °C

Storage Comment: Store undiluted at 2-8 °C for one month or (in aliquots) at -20 °C for longer.



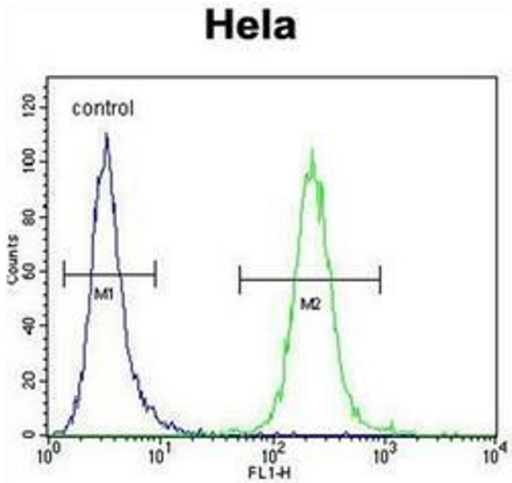
Immunohistochemistry (Paraffin-embedded Sections)

Image 1. Formalin fixed and paraffin embedded human stomach tissue reacted with POLR1B Antibody (N-term) followed by peroxidase conjugation of the secondary antibody and DAB staining.



Western Blotting

Image 2. Western blot analysis of POLR1B Antibody (N-term) in HeLa cell line lysates (35ug/lane). This demonstrates the POLR1B antibody detected the POLR1B protein (arrow).



Flow Cytometry

Image 3. Flow cytometric analysis of HeLa cells using POLR1B Antibody (N-term) Cat.-No AP53382PU-N (right histogram) compared to a negative control cell (left histogram). FITC-conjugated goat-anti-rabbit secondary antibodies were used for the analysis.