



[Go to Product page](#)

Datasheet for ABIN954240

anti-POLR2G antibody (C-Term)

2 Images

Overview

Quantity:	0.4 mL
Target:	POLR2G
Binding Specificity:	AA 145-153, C-Term
Reactivity:	Human
Host:	Rabbit
Clonality:	Polyclonal
Conjugate:	This POLR2G antibody is un-conjugated
Application:	Western Blotting (WB), Flow Cytometry (FACS), Enzyme Immunoassay (EIA)

Product Details

Immunogen:	KLH conjugated synthetic peptide between 145-153 amino acids from the C-terminal region of Human POLR2G
Isotype:	Ig Fraction
Specificity:	This antibody recognizes Human POLR2G (C-term).
Purification:	Protein A column, followed by peptide affinity purification

Target Details

Target:	POLR2G
Alternative Name:	POLR2G (POLR2G Products)
Background:	This gene encodes the seventh largest subunit of RNA polymerase II, the polymerase

Target Details

responsible for synthesizing messenger RNA in eukaryotes. The protein functions in transcription initiation, and is also thought to help stabilize transcribing polymerase molecules during elongation. Synonyms: DNA-directed RNA polymerase II subunit G, DNA-directed RNA polymerase II subunit RPB7, RNA polymerase II 19 kDa subunit, RNA polymerase II subunit B7, RPB19, RPB7

Molecular Weight: 19294 Da

Gene ID: 5436

NCBI Accession: [NP_002687](#)

Pathways: [Regulatory RNA Pathways](#)

Application Details

Application Notes: Optimal working dilution should be determined by the investigator.

Restrictions: For Research Use only

Handling

Format: Liquid

Concentration: 0.25 mg/mL

Buffer: PBS containing 0.09 % (W/V) Sodium Azide as preservative

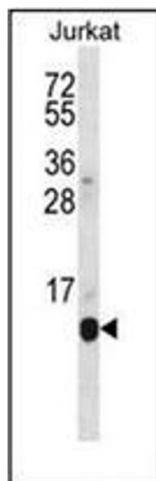
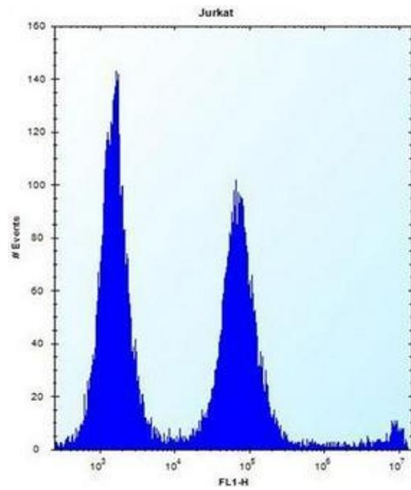
Preservative: Sodium azide

Precaution of Use: This product contains sodium azide: a POISONOUS AND HAZARDOUS SUBSTANCE which should be handled by trained staff only.

Handling Advice: Avoid repeated freezing and thawing.

Storage: 4 °C/-20 °C

Storage Comment: Store undiluted at 2-8 °C for one month or (in aliquots) at -20 °C for longer.



Flow Cytometry

Image 1. Flow cytometric analysis of Jurkat cells using POLR2G Antibody (C-term) Cat.-No AP53385PU-N (right histogram) compared to a negative control cell (left histogram). FITC-conjugated donkey-anti-rabbit secondary antibodies were used for the analysis.

Western Blotting

Image 2. Western blot analysis of POLR2G Antibody (C-term) in Jurkat cell line lysates (35ug/lane). This demonstrates the POLR2G antibody detected the POLR2G protein (arrow).