



[Go to Product page](#)

Datasheet for ABIN954243

## anti-POLR3GL antibody (Middle Region)

### 2 Images

#### Overview

Quantity:	0.4 mL
Target:	POLR3GL
Binding Specificity:	AA 72-101, Middle Region
Reactivity:	Mouse, Human
Host:	Rabbit
Clonality:	Polyclonal
Conjugate:	This POLR3GL antibody is un-conjugated
Application:	Western Blotting (WB), Immunohistochemistry (Paraffin-embedded Sections) (IHC (p)), Enzyme Immunoassay (EIA)

#### Product Details

Immunogen:	KLH conjugated synthetic peptide between 72-101 amino acids from the Central region of human POLR3GL
Isotype:	Ig Fraction
Specificity:	This antibody recognizes Human and Mouse POLR3GL (Center).
Purification:	Protein A column, followed by peptide affinity purification

#### Target Details

Target:	POLR3GL
Alternative Name:	POLR3GL ( <a href="#">POLR3GL Products</a> )

## Target Details

---

Background:	Synonyms: DNA-directed RNA polymerase III subunit G-like, DNA-directed RNA polymerase III subunit RPC7-like, RNA polymerase III subunit C7-like, RPC32-like protein, RPC32HOM
Molecular Weight:	25334 Da
Gene ID:	84265
NCBI Accession:	<a href="#">NP_115681</a>

## Application Details

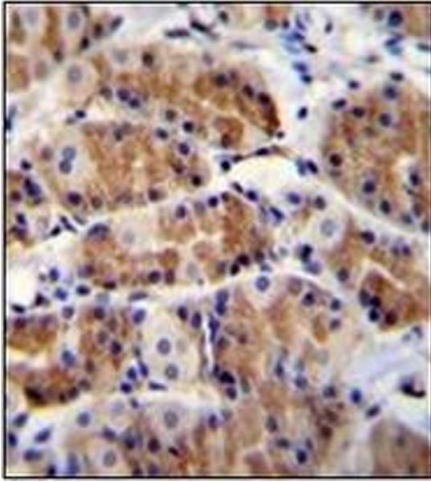
---

Application Notes:	Optimal working dilution should be determined by the investigator.
Restrictions:	For Research Use only

## Handling

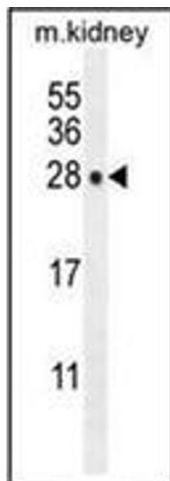
---

Format:	Liquid
Concentration:	0.25 mg/mL
Buffer:	PBS containing 0.09 % (W/V) Sodium Azide as preservative
Preservative:	Sodium azide
Precaution of Use:	This product contains sodium azide: a POISONOUS AND HAZARDOUS SUBSTANCE which should be handled by trained staff only.
Handling Advice:	Avoid repeated freezing and thawing.
Storage:	4 °C/-20 °C
Storage Comment:	Store undiluted at 2-8 °C for one month or (in aliquots) at -20 °C for longer.



### Immunohistochemistry (Paraffin-embedded Sections)

**Image 1.** Immunohistochemistry analysis in formalin fixed and paraffin embedded human stomach tissue reacted with POLR3GL Antibody (Center) followed which was peroxidase conjugated to the secondary antibody and followed by DAB staining. This data demonstrates the use of POLR3GL Antibody (Center) for immunohistochemistry. Clinical relevance has not been evaluated.



### Western Blotting

**Image 2.** Western blot analysis of POLR3GL Antibody (Center) in mouse kidney tissue lysates (35ug/lane). This demonstrates the POLR3GL antibody detected the POLR3GL protein (arrow).