

Datasheet for ABIN954244  
**anti-POMT1 antibody (C-Term)**

## 3 Images

[Go to Product page](#)

## Overview

Quantity:	0.4 mL
Target:	POMT1
Binding Specificity:	AA 713-743, C-Term
Reactivity:	Human
Host:	Rabbit
Clonality:	Polyclonal
Conjugate:	This POMT1 antibody is un-conjugated
Application:	Western Blotting (WB), Flow Cytometry (FACS), Immunohistochemistry (Paraffin-embedded Sections) (IHC (p)), Enzyme Immunoassay (EIA)

## Product Details

Immunogen:	KLH conjugated synthetic peptide between 713-743 amino acids from the C-terminal region of human POMT1
Isotype:	Ig Fraction
Specificity:	This antibody recognizes Human POMT1 (C-term).
Purification:	Protein A column, followed by peptide affinity purification

## Target Details

Target:	POMT1
Alternative Name:	POMT1 ( <a href="#">POMT1 Products</a> )

## Target Details

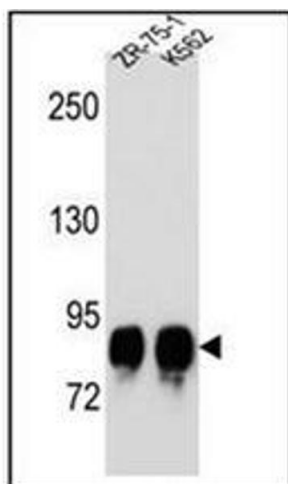
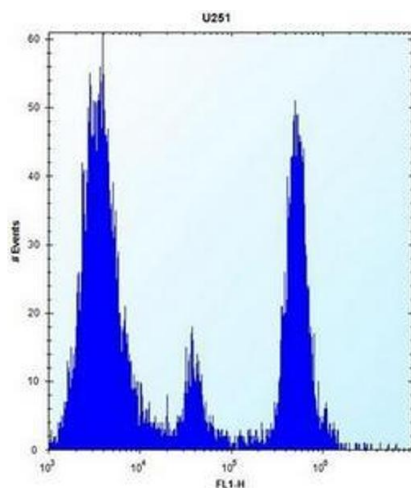
Background:	The protein encoded by this gene is an O-mannosyltransferase that requires interaction with the product of the POMT2 gene for enzymatic function. The encoded protein is found in the membrane of the endoplasmic reticulum. Defects in this gene are a cause of Walker-Warburg syndrome (WWS) and limb-girdle muscular dystrophy type 2K (LGMD2K). Several transcript variants encoding different isoforms have been found for this gene.Synonyms: Dolichyl-phosphate-mannose--protein mannosyltransferase 1, Protein O-mannosyl-transferase 1
Molecular Weight:	84909 Da
Gene ID:	10585
NCBI Accession:	<a href="#">NP_001070833</a>

## Application Details

Application Notes:	Optimal working dilution should be determined by the investigator.
Restrictions:	For Research Use only

## Handling

Format:	Liquid
Concentration:	0.25 mg/mL
Buffer:	PBS containing 0.09 % (W/V) Sodium Azide as preservative
Preservative:	Sodium azide
Precaution of Use:	This product contains sodium azide: a POISONOUS AND HAZARDOUS SUBSTANCE which should be handled by trained staff only.
Handling Advice:	Avoid repeated freezing and thawing.
Storage:	4 °C/-20 °C
Storage Comment:	Store undiluted at 2-8 °C for one month or (in aliquots) at -20 °C for longer.



### Flow Cytometry

**Image 1.** Flow cytometric analysis of U251 cells using POMT1 Antibody (C-term) Cat.-No AP53389PU-N (right histogram) compared to a negative control cell (left histogram). FITC-conjugated goat-anti-rabbit secondary antibodies were used for the analysis.

### Immunohistochemistry (Paraffin-embedded Sections)

**Image 2.** Immunohistochemistry analysis in formalin fixed and paraffin embedded human testis tissue reacted with POMT1 Antibody (C-term) followed which was peroxidase conjugated to the secondary antibody and followed by DAB staining. This data demonstrates the use of POMT1 Antibody (C-term) for immunohistochemistry. Clinical relevance has not been evaluated.

### Western Blotting

**Image 3.** Western blot analysis of POMT1 Antibody (C-term) in ZR-75-1,K562 cell line lysates (35ug/lane). This demonstrates the POMT1 antibody detected the POMT1 protein (arrow).