

Datasheet for ABIN954246
anti-PON2 antibody (N-Term)[Go to Product page](#)

3 Images

Overview

Quantity:	0.4 mL
Target:	PON2
Binding Specificity:	AA 78-107, N-Term
Reactivity:	Human
Host:	Rabbit
Clonality:	Polyclonal
Conjugate:	This PON2 antibody is un-conjugated
Application:	Western Blotting (WB), Flow Cytometry (FACS), Immunohistochemistry (Paraffin-embedded Sections) (IHC (p)), Enzyme Immunoassay (EIA)

Product Details

Immunogen:	KLH conjugated synthetic peptide between 78-107 amino acids from the N-terminal region of human PON2.
Isotype:	Ig Fraction
Specificity:	This antibody recognizes Human PON2 (N-term).
Purification:	Protein A column, followed by peptide affinity purification

Target Details

Target:	PON2
Alternative Name:	PON2 (PON2 Products)

Target Details

Background: This gene encodes a member of the paraoxonase gene family, which includes three known members located adjacent to each other on the long arm of chromosome 7. The encoded protein is ubiquitously expressed in human tissues, membrane-bound, and may act as a cellular antioxidant, protecting cells from oxidative stress. Hydrolytic activity against acylhomoserine lactones, important bacterial quorum-sensing mediators, suggests the encoded protein may also play a role in defense responses to pathogenic bacteria. Mutations in this gene may be associated with vascular disease and a number of quantitative phenotypes related to diabetes. Alternatively spliced transcript variants encoding different isoforms have been described. **Synonyms:** A-esterase 2, Aromatic esterase 2, PON 2, PON-2, Serum arylalkylphosphatase 2, Serum paraoxonase/arylesterase 2

Molecular Weight: 39398 Da

Gene ID: 5445

NCBI Accession: [NP_000296](#)

Application Details

Application Notes: Optimal working dilution should be determined by the investigator.

Restrictions: For Research Use only

Handling

Format: Liquid

Concentration: 0.25 mg/mL

Buffer: PBS containing 0.09 % (W/V) Sodium Azide as preservative

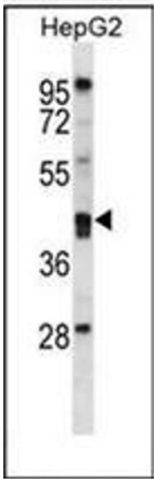
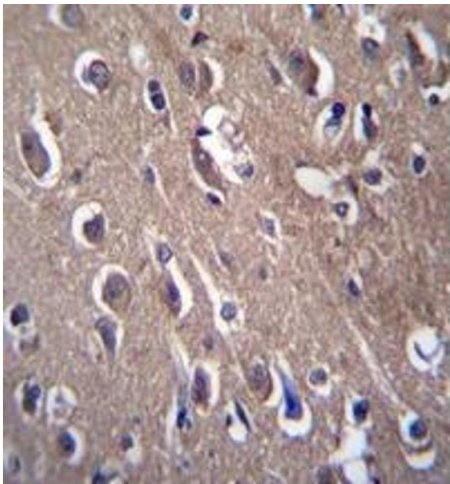
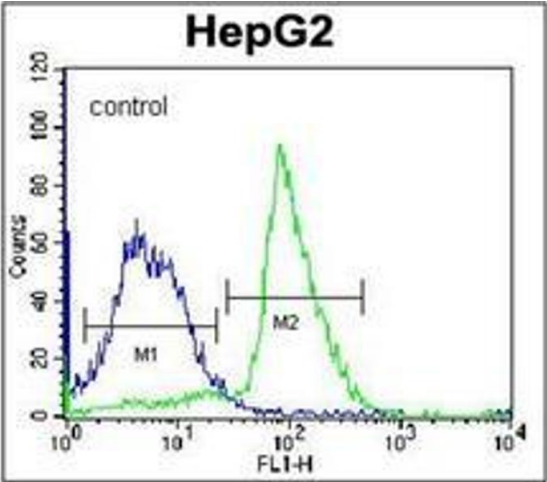
Preservative: Sodium azide

Precaution of Use: This product contains sodium azide: a POISONOUS AND HAZARDOUS SUBSTANCE which should be handled by trained staff only.

Handling Advice: Avoid repeated freezing and thawing.

Storage: 4 °C/-20 °C

Storage Comment: Store undiluted at 2-8 °C for one month or (in aliquots) at -20 °C for longer.



Flow Cytometry

Image 1. Flow cytometric analysis of K562 cells using PON2 Antibody (N-term) Cat.-No AP53391PU-N (right histogram) compared to a negative control cell (left histogram). FITC-conjugated donkey-anti-rabbit secondary antibodies were used for the analysis.

Immunohistochemistry (Paraffin-embedded Sections)

Image 2. Immunohistochemistry analysis in formalin fixed and paraffin embedded human brain tissue reacted with PON2 Antibody (N-term) followed which was peroxidase conjugated to the secondary antibody and followed by DAB staining. This data demonstrates the use of PON2 Antibody (N-term) for immunohistochemistry. Clinical relevance has not been evaluated.

Western Blotting

Image 3. Western blot analysis of PON2 Antibody (N-term) in HepG2 cell line lysates (35ug/lane). This demonstrates the PON2 antibody detected the PON2 protein (arrow).