



[Go to Product page](#)

Datasheet for ABIN954249

## anti-POTEB antibody (C-Term)

### 3 Images

#### Overview

|                      |                                                                                                                                     |
|----------------------|-------------------------------------------------------------------------------------------------------------------------------------|
| Quantity:            | 0.4 mL                                                                                                                              |
| Target:              | POTEB                                                                                                                               |
| Binding Specificity: | AA 388-419, C-Term                                                                                                                  |
| Reactivity:          | Human, Mouse                                                                                                                        |
| Host:                | Rabbit                                                                                                                              |
| Clonality:           | Polyclonal                                                                                                                          |
| Conjugate:           | This POTEB antibody is un-conjugated                                                                                                |
| Application:         | Western Blotting (WB), Flow Cytometry (FACS), Immunohistochemistry (Paraffin-embedded Sections) (IHC (p)), Enzyme Immunoassay (EIA) |

#### Product Details

|               |                                                                                                                |
|---------------|----------------------------------------------------------------------------------------------------------------|
| Immunogen:    | KLH conjugated synthetic peptide between 388-419 amino acids from the C-terminal region of human POTEB / A26B1 |
| Isotype:      | Ig Fraction                                                                                                    |
| Specificity:  | This antibody recognizes Human and Mouse POTEB / A26B1 (C-term).                                               |
| Purification: | Protein A column, followed by peptide affinity purification                                                    |

#### Target Details

|                   |                                                  |
|-------------------|--------------------------------------------------|
| Target:           | POTEB                                            |
| Alternative Name: | POTEB / A26B1 ( <a href="#">POTEB Products</a> ) |

## Target Details

---

|                   |                                                                                                                                                 |
|-------------------|-------------------------------------------------------------------------------------------------------------------------------------------------|
| Background:       | Synonyms: ANKRD26-like family B member 1, POTE ankyrin domain family member B, POTE15, Prostate ovary testis-expressed protein on chromosome 15 |
| Molecular Weight: | 65710 Da                                                                                                                                        |
| Gene ID:          | 339010                                                                                                                                          |
| NCBI Accession:   | <a href="#">NP_997238</a>                                                                                                                       |

## Application Details

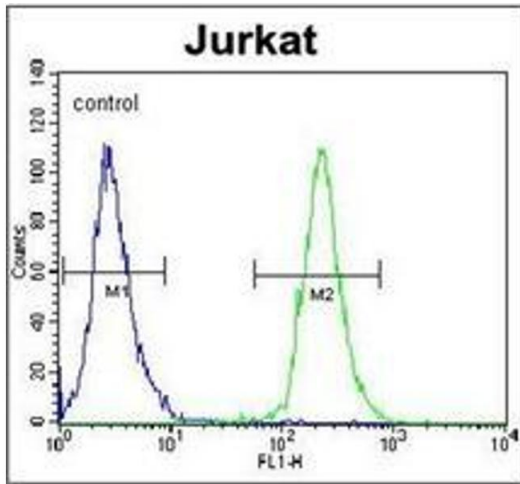
---

|                    |                                                                    |
|--------------------|--------------------------------------------------------------------|
| Application Notes: | Optimal working dilution should be determined by the investigator. |
| Restrictions:      | For Research Use only                                              |

## Handling

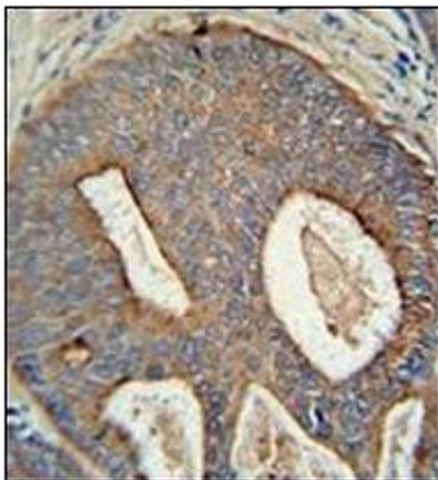
---

|                    |                                                                                                                        |
|--------------------|------------------------------------------------------------------------------------------------------------------------|
| Format:            | Liquid                                                                                                                 |
| Concentration:     | 0.25 mg/mL                                                                                                             |
| Buffer:            | PBS containing 0.09 % (W/V) Sodium Azide as preservative                                                               |
| Preservative:      | Sodium azide                                                                                                           |
| Precaution of Use: | This product contains sodium azide: a POISONOUS AND HAZARDOUS SUBSTANCE which should be handled by trained staff only. |
| Handling Advice:   | Avoid repeated freezing and thawing.                                                                                   |
| Storage:           | 4 °C/-20 °C                                                                                                            |
| Storage Comment:   | Store undiluted at 2-8 °C for one month or (in aliquots) at -20 °C for longer.                                         |



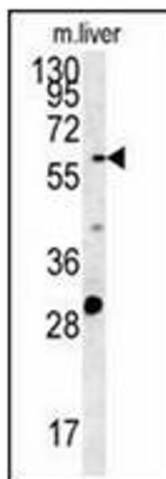
### Flow Cytometry

**Image 1.** Flow cytometric analysis of Jurkat cells using POTEb Antibody (C-term) Cat.-No AP53394PU-N (right histogram) compared to a negative control cell (left histogram). FITC-conjugated goat-anti-rabbit secondary antibodies were used for the analysis.



### Immunohistochemistry (Paraffin-embedded Sections)

**Image 2.** Immunohistochemistry analysis in formalin fixed and paraffin embedded human prostate carcinoma reacted with AP53394PU-N, which was peroxidase conjugated to the secondary antibody and DAB followed by staining. This data demonstrates the use of the POTEb antibody (C-term) for immunohistochemistry. Clinical relevance has not been evaluated.



### Western Blotting

**Image 3.** Western blot analysis of POTEb Antibody (C-term) Cat.-No AP53394PU-N in mouse liver tissue lysates (15ug/lane). This demonstrates the POTEb antibody detected POTEb protein (arrow).