

Datasheet for ABIN954250

anti-POTEE antibody (Middle Region)**2** Images[Go to Product page](#)

Overview

Quantity:	0.4 mL
Target:	POTEE
Binding Specificity:	AA 387-417, Middle Region
Reactivity:	Human
Host:	Rabbit
Clonality:	Polyclonal
Conjugate:	This POTEE antibody is un-conjugated
Application:	Western Blotting (WB), Flow Cytometry (FACS), Enzyme Immunoassay (EIA)

Product Details

Immunogen:	KLH conjugated synthetic peptide between 387-417 amino acids from the Central region of human POTEE
Isotype:	Ig Fraction
Specificity:	This antibody recognizes Human POTEE (Center).
Purification:	Protein A column, followed by peptide affinity purification

Target Details

Target:	POTEE
Alternative Name:	POTEE (POTEE Products)
Background:	Synonyms: A26C1A, POTE2

Target Details

Molecular Weight:	121363 Da
Gene ID:	445582
NCBI Accession:	NP_001077007

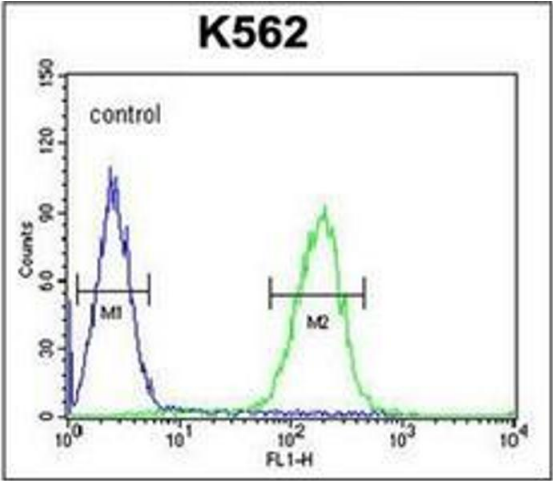
Application Details

Application Notes:	Optimal working dilution should be determined by the investigator.
Restrictions:	For Research Use only

Handling

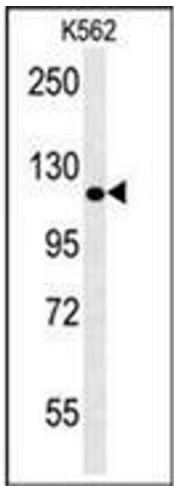
Format:	Liquid
Concentration:	0.25 mg/mL
Buffer:	PBS containing 0.09 % (W/V) Sodium Azide as preservative
Preservative:	Sodium azide
Precaution of Use:	This product contains sodium azide: a POISONOUS AND HAZARDOUS SUBSTANCE which should be handled by trained staff only.
Handling Advice:	Avoid repeated freezing and thawing.
Storage:	4 °C/-20 °C
Storage Comment:	Store undiluted at 2-8 °C for one month or (in aliquots) at -20 °C for longer.

Images



Flow Cytometry

Image 1. Flow cytometric analysis of K562 cells using POTE Antibody (Center) Cat.-No AP53395PU-N (right histogram) compared to a negative control cell (left histogram). FITC-conjugated goat-anti-rabbit secondary antibodies were used for the analysis.



Western Blotting

Image 2. Western blot analysis of POTEE Antibody (Center) in K562 cell line lysates (35ug/lane). This demonstrates the POTEE antibody detected the POTEE protein (arrow).