

Datasheet for ABIN954259
anti-POU4F2 antibody (C-Term)[Go to Product page](#)

1 Image

Overview

Quantity:	0.4 mL
Target:	POU4F2
Binding Specificity:	AA 310-339, C-Term
Reactivity:	Human
Host:	Rabbit
Clonality:	Polyclonal
Conjugate:	This POU4F2 antibody is un-conjugated
Application:	Western Blotting (WB), Enzyme Immunoassay (EIA)

Product Details

Immunogen:	KLH conjugated synthetic peptide between 310-339 amino acids from the C-terminal region of Human POU4F2
Isotype:	Ig Fraction
Specificity:	This antibody recognizes Human POU4F2 (C-term).
Purification:	Protein A column, followed by peptide affinity purification

Target Details

Target:	POU4F2
Alternative Name:	POU4F2 (POU4F2 Products)
Background:	POU4F2 is a member of the POU-domain family of transcription factors. POU-domain proteins

Target Details

have been observed to play important roles in control of cell identity in several systems. A class IV POU-domain protein, POU4F2 is found in human retina exclusively within a subpopulation of ganglion cells where it may play a role in determining or maintaining the identities of a small subset of visual system neurons. Synonyms: BRN3B, Brain-3B, Brain-specific homeobox/POU domain protein 3B, Brn-3B, POU domain class 4 transcription factor 2

Molecular Weight: 43087 Da

Gene ID: 5458

NCBI Accession: [NP_004566](#)

Pathways: [Intracellular Steroid Hormone Receptor Signaling Pathway](#), [Sensory Perception of Sound](#)

Application Details

Application Notes: Optimal working dilution should be determined by the investigator.

Restrictions: For Research Use only

Handling

Format: Liquid

Concentration: 0.25 mg/mL

Buffer: PBS containing 0.09 % (W/V) Sodium Azide as preservative

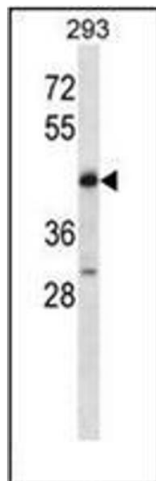
Preservative: Sodium azide

Precaution of Use: This product contains sodium azide: a POISONOUS AND HAZARDOUS SUBSTANCE which should be handled by trained staff only.

Handling Advice: Avoid repeated freezing and thawing.

Storage: 4 °C/-20 °C

Storage Comment: Store undiluted at 2-8 °C for one month or (in aliquots) at -20 °C for longer.



Western Blotting

Image 1. Western blot analysis of POU4F2 Antibody