

Datasheet for ABIN954262

anti-POU6F2 antibody (N-Term)[Go to Product page](#)**1** Image

Overview

Quantity:	0.4 mL
Target:	POU6F2
Binding Specificity:	AA 33-61, N-Term
Reactivity:	Human
Host:	Rabbit
Clonality:	Polyclonal
Conjugate:	This POU6F2 antibody is un-conjugated
Application:	Western Blotting (WB), Enzyme Immunoassay (EIA)

Product Details

Immunogen:	KLH conjugated synthetic peptide between 33-61 amino acids from the N-terminal region of human POU6F2.
Isotype:	Ig Fraction
Specificity:	This antibody recognizes Human POU6F2 (N-term).
Purification:	Affinity Chromatography on Protein A

Target Details

Target:	POU6F2
Alternative Name:	POU6F2 (POU6F2 Products)
Background:	This gene encodes a member of the POU protein family characterized by the presence of a

Target Details

bipartite DNA binding domain, consisting of a POU-specific domain and a homeodomain, separated by a variable polylinker. The DNA binding domain may bind to DNA as monomers or as homo- and/or heterodimers, in a sequence-specific manner. The POU family members are transcriptional regulators, many of which are known to control cell type-specific differentiation pathways. This gene is a tumor suppressor involved in Wilms tumor (WT) predisposition. Alternatively spliced transcript variants encoding distinct isoforms have been found for this gene. Synonyms: POU domain class 6 transcription factor 2, RPF-1, RPF1, Retina-derived POU domain factor 1

Molecular Weight: 72409 Da

Gene ID: 11281

NCBI Accession: [NP_001159490](#)

Application Details

Application Notes: Optimal working dilution should be determined by the investigator.

Restrictions: For Research Use only

Handling

Format: Liquid

Concentration: 0.25 mg/mL

Buffer: PBS containing 0.09 % (W/V) Sodium Azide as preservative

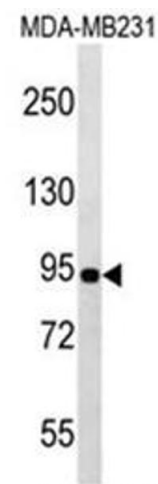
Preservative: Sodium azide

Precaution of Use: This product contains sodium azide: a POISONOUS AND HAZARDOUS SUBSTANCE which should be handled by trained staff only.

Handling Advice: Avoid repeated freezing and thawing.

Storage: 4 °C/-20 °C

Storage Comment: Store undiluted at 2-8 °C for one month or (in aliquots) at -20 °C for longer.



Western Blotting

Image 1. Western blot analysis of POU6F2 Antibody (N-term) in MDA-MB231 cell line lysates (35ug/lane). This demonstrates the POU6F2 antibody detected the POU6F2 protein (arrow).