



[Go to Product page](#)

Datasheet for ABIN954267

anti-PPIL1 antibody (Middle Region)

2 Images

Overview

Quantity:	0.4 mL
Target:	PPIL1
Binding Specificity:	AA 62-91, Middle Region
Reactivity:	Human
Host:	Rabbit
Clonality:	Polyclonal
Application:	Western Blotting (WB), Enzyme Immunoassay (EIA)

Product Details

Immunogen:	KLH conjugated synthetic peptide between 62-91 amino acids from the Central region of human PPIL1
Isotype:	Ig Fraction
Specificity:	This antibody recognizes Human PPIL1 (Center).
Purification:	Affinity Chromatography on Protein A

Target Details

Target:	PPIL1
Alternative Name:	PPIL1 (PPIL1 Products)
Background:	This gene is a member of the cyclophilin family of peptidylprolyl isomerases (PPIases). The cyclophilins are a highly conserved, ubiquitous family, members of which play an important role in protein folding, immunosuppression by cyclosporin A, and infection of HIV-1 virions. Based

Target Details

on similarity to other PPIases, this protein could accelerate the folding of proteins and might catalyze the cis-trans isomerization of proline imidic peptide bonds in oligopeptides. Synonyms: CYPL1, PPIase, Peptidyl-prolyl cis-trans isomerase-like 1, Rotamase PPIL1

Molecular Weight: 18237 Da

Gene ID: 51645

NCBI Accession: [NP_057143](#)

Application Details

Application Notes: Optimal working dilution should be determined by the investigator.

Restrictions: For Research Use only

Handling

Format: Liquid

Concentration: 0.25 mg/mL

Buffer: PBS containing 0.09 % (W/V) Sodium Azide as preservative

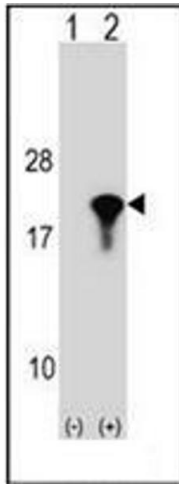
Preservative: Sodium azide

Precaution of Use: This product contains sodium azide: a POISONOUS AND HAZARDOUS SUBSTANCE which should be handled by trained staff only.

Handling Advice: Avoid repeated freezing and thawing.

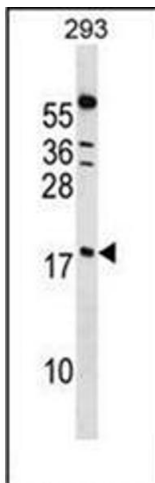
Storage: 4 °C/-20 °C

Storage Comment: Store undiluted at 2-8 °C for one month or (in aliquots) at -20 °C for longer.



Western Blotting

Image 1. Western blot analysis of PPIL1 (arrow) using PPIL1 Antibody (Center) Cat.-No AP53412PU-N. 293 cell lysates (2 ug/lane) either nontransfected (Lane 1) or transiently transfected (Lane 2) with the PPIL1 gene.



Western Blotting

Image 2. Western blot analysis of PPIL1 Antibody (Center) in 293 cell line lysates (35ug/lane). This demonstrates the PPIL1 antibody detected the PPIL1 protein (arrow)