

Datasheet for ABIN954270
anti-PPP1R14C antibody (C-Term)

2 Images

[Go to Product page](#)

Overview

Quantity:	0.4 mL
Target:	PPP1R14C
Binding Specificity:	AA 133-163, C-Term
Reactivity:	Human, Mouse
Host:	Rabbit
Clonality:	Polyclonal
Conjugate:	This PPP1R14C antibody is un-conjugated
Application:	Western Blotting (WB), Immunohistochemistry (Paraffin-embedded Sections) (IHC (p)), Enzyme Immunoassay (EIA)

Product Details

Immunogen:	KLH conjugated synthetic peptide between 133-163 amino acids from the C-terminal region of human PPP1R14C.
Isotype:	Ig Fraction
Specificity:	This antibody recognizes Human and Mouse PPP1R14C (C-term).
Purification:	Affinity Chromatography on Protein A

Target Details

Target:	PPP1R14C
Alternative Name:	PPP1R14C (PPP1R14C Products)

Target Details

Background: The degree of protein phosphorylation is regulated by a balance of protein kinase and phosphatase activities. Protein phosphatase-1 (PP1, see MIM 176875) is a signal-transducing phosphatase that influences neuronal activity, protein synthesis, metabolism, muscle contraction, and cell division. PPP1R14C is an inhibitor of PP1 (Liu et al., 2002 [PubMed 11812771]).[supplied by OMIM].Synonyms: KEPI, Kinase-enhanced PP1 inhibitor, NY-BR-81, PKC-potentiated PP1 inhibitory protein, Protein phosphatase 1 regulatory subunit 14C, Serologically defined breast cancer antigen NY-BR-81

Molecular Weight: 17843 Da

Gene ID: 81706

NCBI Accession: [NP_112211](#)

Application Details

Application Notes: Optimal working dilution should be determined by the investigator.

Restrictions: For Research Use only

Handling

Format: Liquid

Concentration: 0.25 mg/mL

Buffer: PBS containing 0.09 % (W/V) Sodium Azide as preservative

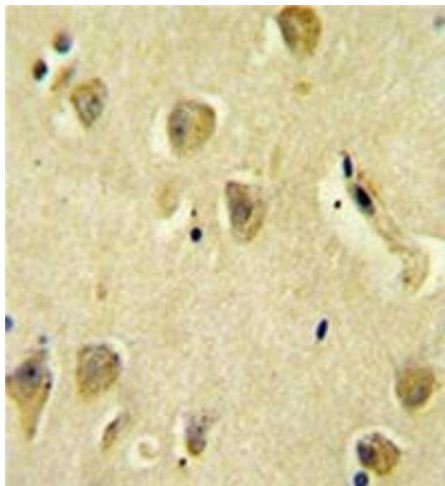
Preservative: Sodium azide

Precaution of Use: This product contains sodium azide: a POISONOUS AND HAZARDOUS SUBSTANCE which should be handled by trained staff only.

Handling Advice: Avoid repeated freezing and thawing.

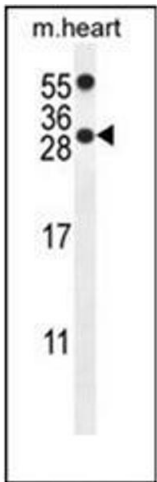
Storage: 4 °C/-20 °C

Storage Comment: Store undiluted at 2-8 °C for one month or (in aliquots) at -20 °C for longer.



Immunohistochemistry (Paraffin-embedded Sections)

Image 1. Formalin fixed and paraffin embedded human brain tissue reacted with PP1R14C Antibody (C-term) followed by peroxidase conjugation of the secondary antibody and DAB staining.



Western Blotting

Image 2. Western blot analysis of PP1R14C Antibody (C-term) in mouse heart tissue lysates (35ug/lane). This demonstrates the PP1R14C antibody detected the PP1R14C protein (arrow).