

Datasheet for ABIN954272  
**anti-PPP1R3A antibody (Middle Region)**[Go to Product page](#)

## 2 Images

## Overview

Quantity:	0.4 mL
Target:	PPP1R3A
Binding Specificity:	AA 757-786, Middle Region
Reactivity:	Human
Host:	Rabbit
Clonality:	Polyclonal
Conjugate:	This PPP1R3A antibody is un-conjugated
Application:	Western Blotting (WB), Flow Cytometry (FACS), Enzyme Immunoassay (EIA)

## Product Details

Immunogen:	KLH conjugated synthetic peptide between 757-786 amino acids from the Central region of Human PPP1R3A
Isotype:	Ig Fraction
Specificity:	This antibody recognizes Human PPP1R3A (Center).
Purification:	Affinity Chromatography on Protein A

## Target Details

Target:	PPP1R3A
Alternative Name:	PPP1R3A ( <a href="#">PPP1R3A Products</a> )
Background:	The glycogen-associated form of protein phosphatase-1 (PP1) derived from skeletal muscle is

## Target Details

a heterodimer composed of a 37-kD catalytic subunit and a 124-kD targeting and regulatory subunit. This gene encodes the regulatory subunit which binds to muscle glycogen with high affinity, thereby enhancing dephosphorylation of glycogen-bound substrates for PP1 such as glycogen synthase and glycogen phosphorylase kinase. [provided by RefSeq].Synonyms: PP1G, Protein phosphatase 1 glycogen-associated regulatory subunit, Protein phosphatase 1 regulatory subunit 3A, Protein phosphatase type-1 glycogen targeting subunit, RG1

Molecular Weight: 125767 Da

Gene ID: 5506

NCBI Accession: [NP\\_002702](#)

Pathways: [Cellular Glucan Metabolic Process](#)

## Application Details

Application Notes: Optimal working dilution should be determined by the investigator.

Restrictions: For Research Use only

## Handling

Format: Liquid

Concentration: 0.25 mg/mL

Buffer: PBS containing 0.09 % (W/V) Sodium Azide as preservative

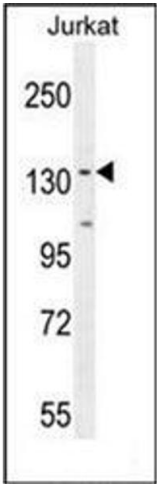
Preservative: Sodium azide

Precaution of Use: This product contains sodium azide: a POISONOUS AND HAZARDOUS SUBSTANCE which should be handled by trained staff only.

Handling Advice: Avoid repeated freezing and thawing.

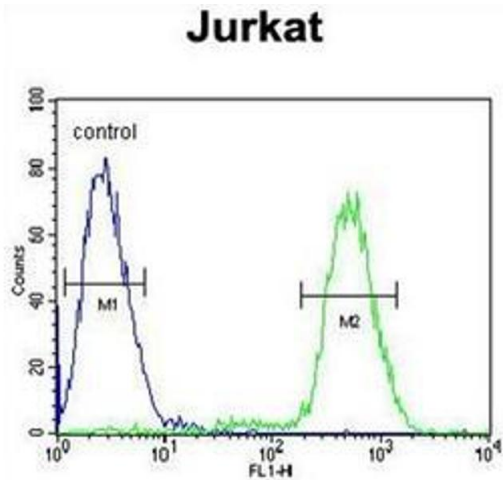
Storage: 4 °C/-20 °C

Storage Comment: Store undiluted at 2-8 °C for one month or (in aliquots) at -20 °C for longer.



Western Blotting

**Image 1.** Western blot analysis of PPP1R3A Antibody in Jurkat cell line lysates (35ug/lane). This demonstrates the PPP1R3A antibody detected the PPP1R3A protein (arrow).



Flow Cytometry

**Image 2.** Flow cytometric analysis of Jurkat cells using PPP1R3A Antibody (right histogram) compared to a negative control cell (left histogram). FITC-conjugated goat-anti-rabbit secondary antibodies were used for the analysis.