

Datasheet for ABIN954279

anti-Calcineurin B antibody (N-Term)**3** Images[Go to Product page](#)

Overview

Quantity:	0.4 mL
Target:	Calcineurin B (CAN)
Binding Specificity:	AA 9-38, N-Term
Reactivity:	Human, Mouse
Host:	Rabbit
Clonality:	Polyclonal
Conjugate:	This Calcineurin B antibody is un-conjugated
Application:	Western Blotting (WB), Flow Cytometry (FACS), Immunohistochemistry (Paraffin-embedded Sections) (IHC (p)), Enzyme Immunoassay (EIA)

Product Details

Immunogen:	KLH conjugated synthetic peptide between 9~38 amino acids from the N-terminal region of Human PPP3R2 / CBLP Genename: PPP3R2
Isotype:	Ig Fraction
Specificity:	This antibody recognizes Human and Mouse PPP3R2 / CBLP (N-term).
Purification:	Affinity Chromatography on Protein A

Target Details

Target:	Calcineurin B (CAN)
Alternative Name:	PPP3R2 / CBLP (CAN Products)

Target Details

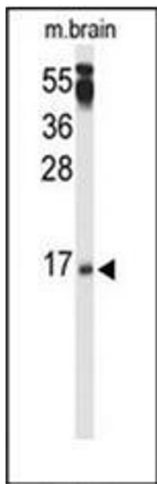
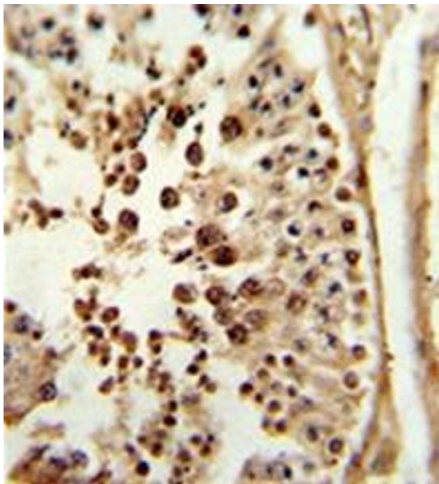
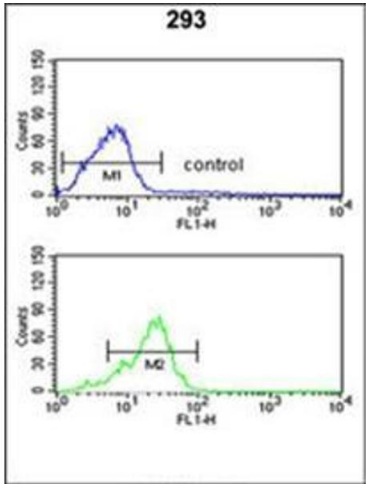
Background:	PPP3R2 is regulatory subunit of calcineurin, a calcium-dependent, calmodulin stimulated protein phosphatase. This protein confers calcium sensitivity (By similarity).Synonyms: CBLP, CNBII, Calcineurin B-like protein, Calcineurin BII, Calcineurin subunit B type 2, Protein phosphatase 2B regulatory subunit 2, Protein phosphatase 3 regulatory subunit B beta isoform
Molecular Weight:	19533 Da
Gene ID:	5535
NCBI Accession:	NP_671709
Pathways:	Cellular Glucan Metabolic Process , VEGF Signaling

Application Details

Application Notes:	Optimal working dilution should be determined by the investigator.
Restrictions:	For Research Use only

Handling

Format:	Liquid
Concentration:	0.25 mg/mL
Buffer:	PBS containing 0.09 % (W/V) Sodium Azide as preservative
Preservative:	Sodium azide
Precaution of Use:	This product contains sodium azide: a POISONOUS AND HAZARDOUS SUBSTANCE which should be handled by trained staff only.
Handling Advice:	Avoid repeated freezing and thawing.
Storage:	4 °C/-20 °C
Storage Comment:	Store undiluted at 2-8 °C for one month or (in aliquots) at -20 °C for longer.



Flow Cytometry

Image 1. Flow cytometric analysis of 293 cells using PPP3R2 / CBLP Antibody (N-term) Cat.-No AP53423PU-N (bottom histogram) compared to a negative control cell (top histogram). FITC-conjugated goat-anti-rabbit secondary antibodies were used for the analysis.

Immunohistochemistry (Paraffin-embedded Sections)

Image 2. Formalin-fixed and paraffin-embedded human testis tissue reacted with PPP3R2 / CBLP Antibody (N-term) followed which was peroxidase-conjugated to the secondary antibody, followed by DAB staining.

Western Blotting

Image 3. Western blot analysis of PPP3R2 / CBLP Antibody (N-term) in mouse brain tissue lysates (35ug/lane). PPP3R2 (arrow) was detected using the purified Pab.